



MANITOU

MANITOU

M170D

domnick
+ müller
IN WERKSTÄTTEN UND GUT FINDER



Verkauf - Neu, Gebrauchte
Vermietung - Service
06772 - 93 06 0
www.domnick-mueller.de



MANITOU



8

MI70D

domnick
müller
Verkauf - Rep. - Service
Veranstaltung - Schulung
06772 - 95 86 8
www.domnick-mueller.de

MANITOU





MI70D

domnick
müller
Tel: +49 30 80000
Fax: +49 30 80001
www.domnick-mueller.de

MANITOU

8



3

MI70D

domnick
müller
1970-2011

MANITOU



MANITOU

00875799

MI70D

domnick müller
Kontakt: Herr. Schneider
Verkaufsbüro, Berlin
030 777-30 60 0
www.domnick-mueller.de

MANITOU



MANITOU

8

00875799

106

MI70D

dominik müller
Tel: 030 630 100
Fax: 030 630 101
www.dominik-mueller.de

MANITOU



MANITOU

00875799

106

M120D

domnick müller
MANITOU



MANITOU

MANITOU

MANITOU

MANITOU

00875799

106

M170D

domnick & mulken

MANITOU



MANITOU

MI 280

MI 280

In der Nähe
Verhert



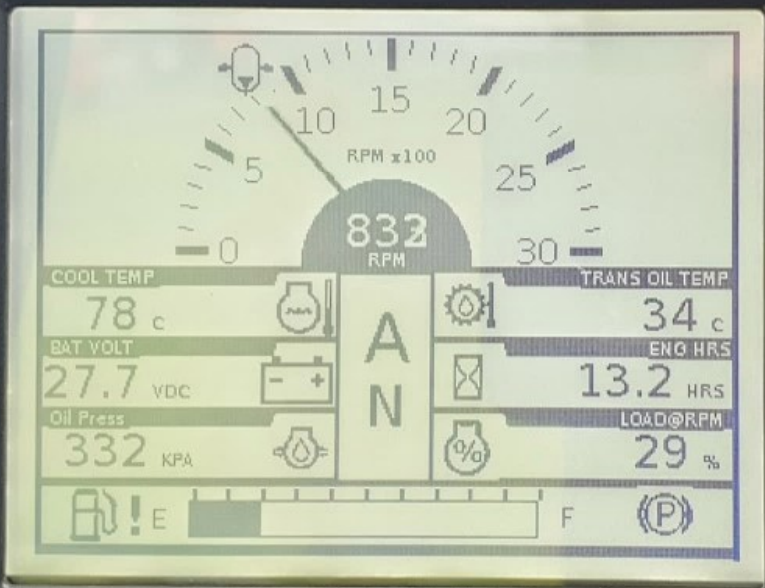
MANITOU

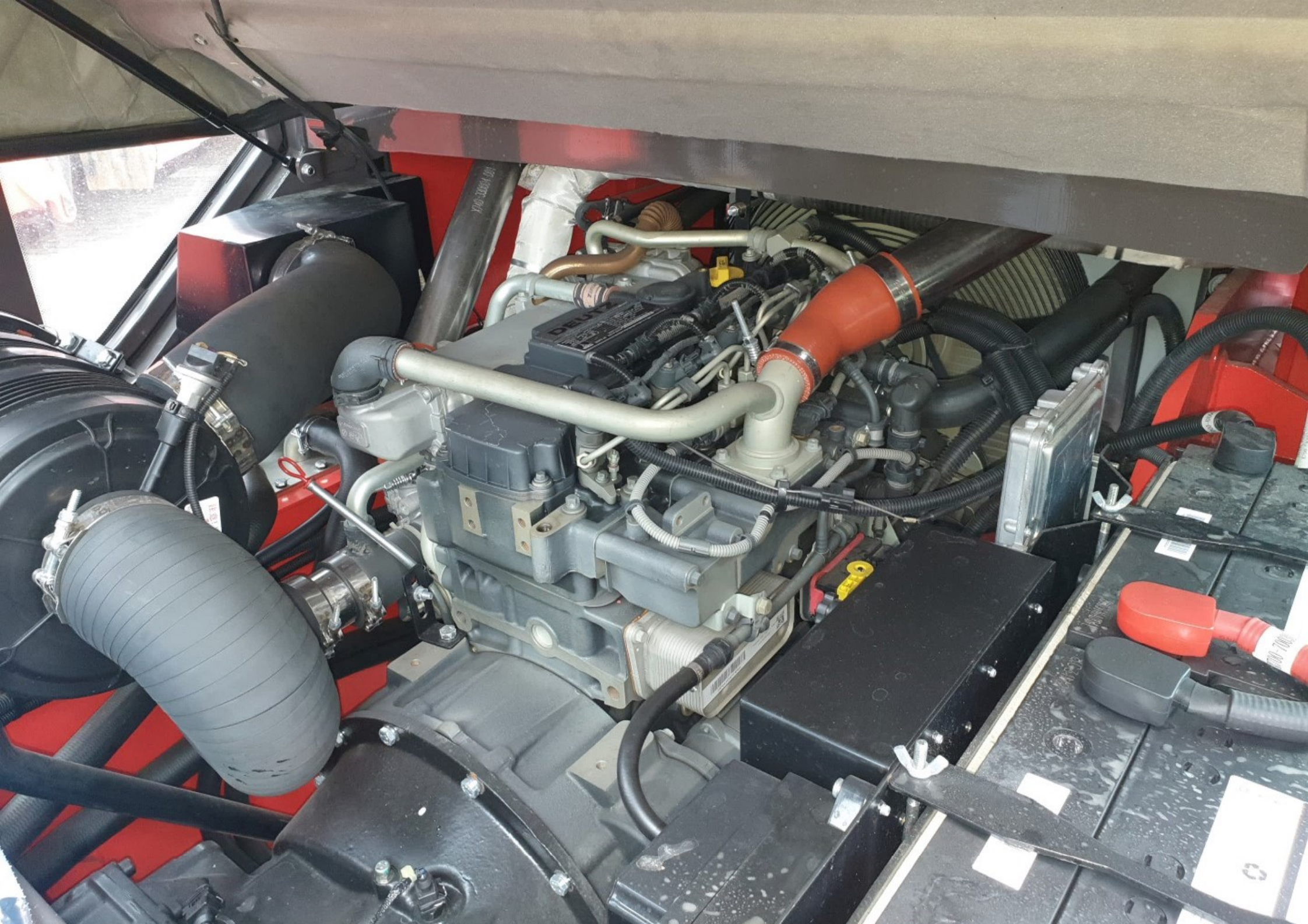
OFF

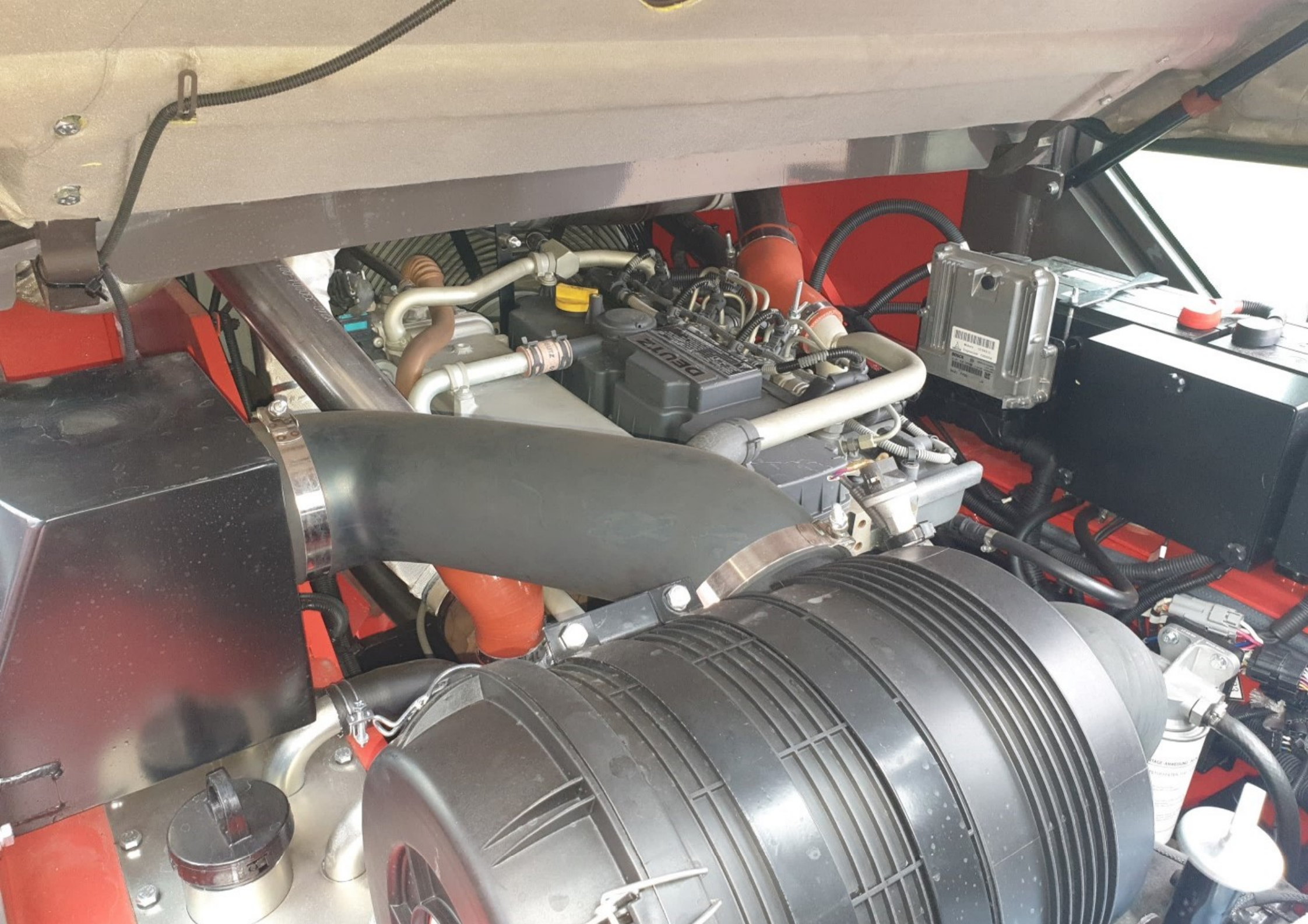
ON OFF

ON OFF

MANITOU







DEUTZ

DEUTZ
DEUTZ AG MADE IN GERMANY

MODEL TCD 3.6 L4
SERIAL 12104313

FORM 2300	REVISED	DATE
KW 55.4	HP 74	08/2003
6088 G4D155A	DISPL 3.621	SPEED

EMISSION CONTROL INFORMATION
THIS ENGINE COMPLIES WITH U.S., EPA AND CALIFORNIA
REGULATIONS FOR 2017 NONROAD DIESEL ENGINES AND
EPA REGULATIONS FOR STATIONARY DIESEL ENGINES
FAMILY HDXL03.6063 37-56KW
EGS:DDI, TG, GAG, EGM, EGR, DDC
FUEL: DIESEL ULTRA LOW SULFUR FUEL ONLY

01222483



Designation

MI700

Series

ST3B S2

Power

55.4 kW

Year of manufacture

2019/04

Model year

2019

Max. vertical force (on trailer hook)

1581 daN

Serial Number / Product Identification Number

>MAN000000C000875799<

Authorized gross vehicle weight

20890 kg

Unladen mass

10890 kg

Rated capacity

7000 kg

Drag Strain

6280 daN

MANITOU BF - 44158 ANCENIS CEDEX - FRANCE

N°52609079

CAPACITE NOMINALE
 RATED CAPACITY
 NENNKAPAZITÄT
 CAPACIDAD NOMINAL
 CAPACITÀ NOMINALE

7000

kg

CAPACITES EFFECTIVES
 ACTUAL CAPACITIES
 EFFEKTIVE KAPAZITÄT
 CAPACIDAD EFECTIVA
 CAPACITÀ EFFETTIVA

SUVANT NORME ISO 3691-1 (ISO 22915-2)

1- Jusqu'à hauteur de levée

Up to height of
 Bis zur hubhöhe

Hasta altura de elevación
 Sino ad altezza di sollevamento

mm

mm

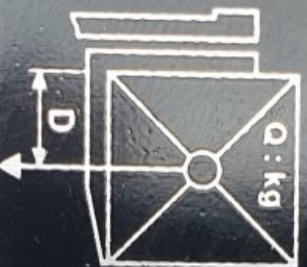
2- Pour hauteur maximale de

For maximum height of
 Für maximale Höhe
 Para altura máxima de
 Per altezza massima di

4500

mm

MAT VERTICAL
 VERTICAL MAST
 VERTIKALER MAST
 MASTIL VERTICAL
 RAMPA VERTICALE



D : mm

1-	-	-	-
2-	6400	4800	4270

1-	-	-	-
2-	600	1000	1200

EQUIPEMENT
 ATTACHMENT
 ZUBEHÖR
 EQUIPO
 ATTREZZATURA

150D-SSS-1208

CAPACITES EFFECTIVES
 ACTUAL CAPACITIES
 EFFEKTIVE KAPAZITÄT
 CAPACIDAD EFECTIVA
 CAPACITÀ EFFETTIVA

1-	-	-	-
2-	5900	4420	3930



Tägli

FAHRV

1. Re
2. Bre
3. Rü
4. Le

HUBE

1. Fü
2. Hy
3. G
4. Hu

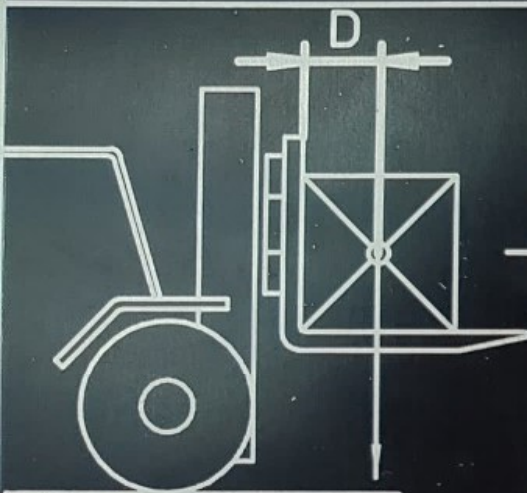


www.c

EQUIPEMENT - ATTACHMENT
 ZUBEHOR - EQUIPO - ATTREZZATURA

FOURCHES
 150X65X2440

-



EFFECTIVE
 ACTUAL
 EFFEKTIVE
 EFFETTIVA

SUIVANT NORME ISO 3691-1 22915-2

1220 mm

- mm

HAUTEURS EFFECTIVES
 ACTUAL HEIGHT
 EFFEKTIVE HÖHE
 ALTURA EFECTIVA
 ALTEZZA EFFETTIVA

CAPACITES EFFECTIVES
 ACTUAL CAPACITIES
 EFFEKTIVE KAPAZITAT
 CAPACIDAD EFECTIVA
 CAPACITA EFFETTIVA

CAPACITES EFFECTIVES
 ACTUAL CAPACITIES
 EFFEKTIVE KAPAZITAT
 CAPACIDAD EFECTIVA
 CAPACITA EFFETTIVA

Jusqu'à hauteur de levée
 Up for height of
 Bis zur hubhöhe
 Hasta altura de elevación
 Sino ad altezza di sollevamento

- mm

- kg

- kg

Pour hauteur maximale de
 For maximum height of
 Für maximale höhe
 Para altura máxima de
 Per altezza massima di

4500 mm

3350 kg

- kg

n°52521865



MANITOU

MANITOU

MANITOU

MANITOU

TOU

MANITOU

MANITOU

MANITOU

20

MYT 2040

MANITOU

00875799

MANITOU



MANITOU

MANITOU

MANITOU

MANITOU

MANITOU

MANITOU

MANITOU

MANITOU

20

MRT 20-60

MANITOU

00875799

MANITOU



A2-Z

123

+



43 mm



84 mm



6800 kg



600 mm



[Redacted]

X1A7810025-4

X159D, 855-1208



2018



210 PAT



301 kg

Cascade Corporation • www.cascorp.com • Icons & Patents: www.cascorp.com/support

6095754

SHINGI-15NHS-8

MADE IN CHINA

FWL



825-15NHS

MADE IN CHINA



721

