



MANITOU
MSI 315 T

**domnick
müller**
Verkauf - Ihre Fachfirma
Service - Ihre Spezialisten
www.domnick-mueller.de



MANITOU
MSI35T

domnick + müller
Kontakt: Frau Schmidt
Telefon: 0421 90 90 90
www.domnick-mueller.de

domnick + müller

HANDLE

mobile easyk



MANITOU
MSI35T

**domnick
müller**
Verkauf - Miet - Gebrauch
Beratung - Service
06172 - 95 66 0
www.domnick-mueller.de



MANITOU
MSI35T

domnick
+ müller
Verkauf - Neu - Gebrauchte
Vermietung - Service
06172 - 95 88 0
www.domnick-mueller.de



MANITOU

MANITOU
MSI 35 T

Eco 40%

damnick müller
Hilflos bei der Arbeit? - 0170 - 30 90 8
www.damnick-mueller.de



dominick + müller 

MANITOU
HANDLING YOUR WORLD

mobile 
easykey



dominick + müller

MANITOU
MST38T

dominick + müller
Hilft bei Auswahl &
Verkauf von Baumaschinen
022-8081



domnick
+ müller

mobile
mobile

dor
+ m

domnick
+ müller
MADE IN GERMANY
100% QUALITY
100% SAFETY
100% RELIABILITY

MANITOU
MS185T



dominick
müller



MANITOU
MSI153T

dominick + müller
Haupt- & Nebengeschäft
Helmholtzstraße 10
42699 Solingen
0212-6500-1000
www.dominick-mueller.de



dominick
+ müller

gal
MANITOU
HANDLING YOUR WAY

mobile
easykey®

PLA 10
10



domnick
+müller

SCANIA

MANITOU
HST35BT

domnick
+müller
HILF ICH BEI DER
WISSEN SIE ALLES
0157-36187
www.domnick-mueller.de

domnick
+müller

MANITOU
TRANSFORMING YOUR WORLD

mobile
PasivKey





domnick
+ müller

MANITOU
HANDLING YOUR WORLD



MANITOU
MSI 355 T

domnick
+ müller
Verkauf des Selbstverbrauchs
Verkauf von Ersatzteilen
04372 - 93 04 0 0
www.domnick-mueller.de



domnick
müller



domnick
+ müller



MANITOU
HANDLING YOUR WORLD



easykey®



MANITOU MSI35T

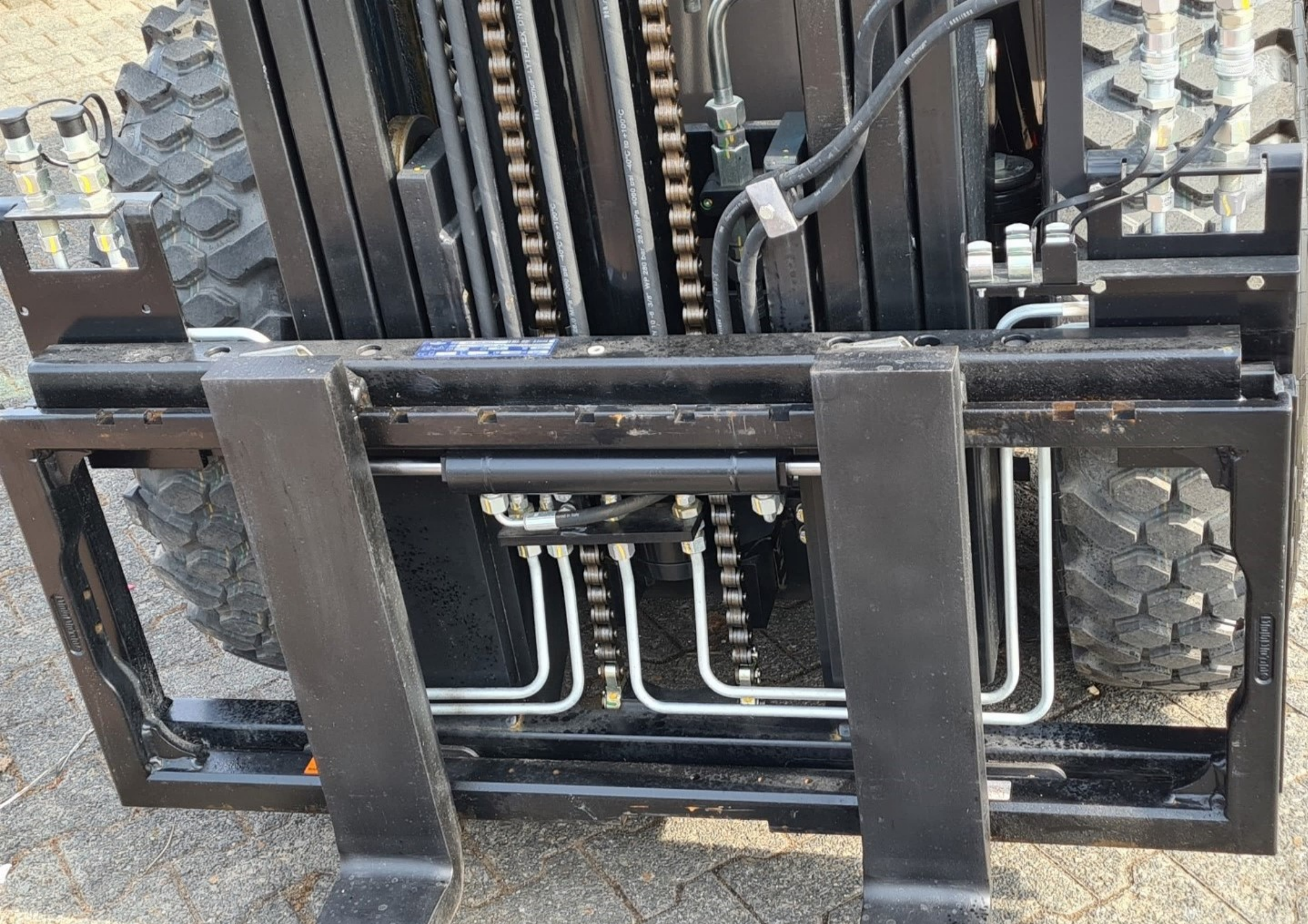
ST₁₁₆ T4F 



 **domnick
+ müller**
SIE WERDEN UNS GUT FINDEN



Verkauf · Neu · Gebrauchte
Vermietung · Service
06172 - 95 66 0
www.domnick-mueller.de 



Blue label with illegible text, possibly a manufacturer's mark or part number.

HY-Master LYTELEX DN 10

3/8" MPT 200 bar -40°C to +100°C

1 1/2" 3/8" MPT 200 bar -40°C to +100°C

1 1/2" 3/8" MPT 200 bar -40°C to +100°C

1 1/2" 3/8" MPT 200 bar -40°C to +100°C

1 1/2" 3/8" MPT 200 bar -40°C to +100°C

1 1/2" 3/8" MPT 200 bar -40°C to +100°C

1 1/2" 3/8" MPT 200 bar -40°C to +100°C

1 1/2" 3/8" MPT 200 bar -40°C to +100°C

1 1/2" 3/8" MPT 200 bar -40°C to +100°C

1 1/2" 3/8" MPT 200 bar -40°C to +100°C

1 1/2" 3/8" MPT 200 bar -40°C to +100°C

1 1/2" 3/8" MPT 200 bar -40°C to +100°C

1 1/2" 3/8" MPT 200 bar -40°C to +100°C

1 1/2" 3/8" MPT 200 bar -40°C to +100°C

1 1/2" 3/8" MPT 200 bar -40°C to +100°C

1 1/2" 3/8" MPT 200 bar -40°C to +100°C

1 1/2" 3/8" MPT 200 bar -40°C to +100°C

1 1/2" 3/8" MPT 200 bar -40°C to +100°C

1 1/2" 3/8" MPT 200 bar -40°C to +100°C



4x4
LUB

LUB
106

GRAMMER

KUBOTA

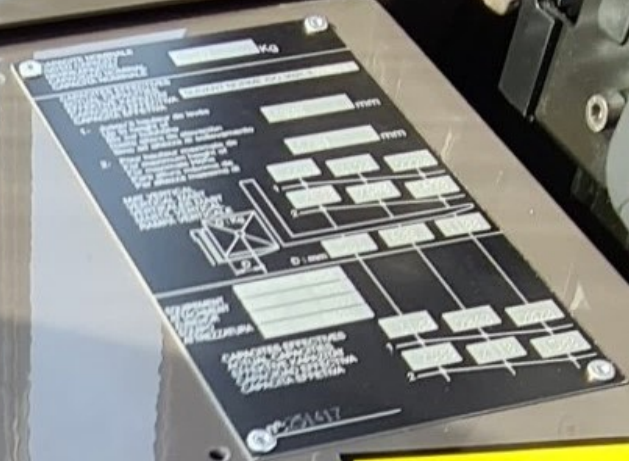
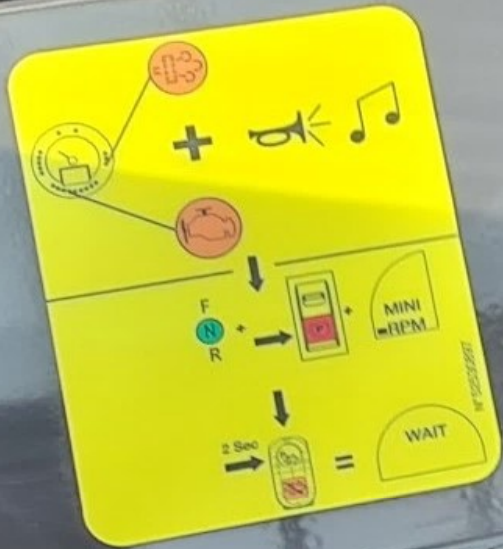
LUB





120 000 0 000 000
120 000 0 000 000
120 000 0 000 000





BREVETS - PATENTS
FR 93 12803
EP 0 650 921

