



MANITOU
HANDLING YOUR WORLD

dominick
mobile
easykey®

MANITOU 160 ATJ+

160 ATJ+

MANITOU

MANITOU
35810



MANITOU
ELEVATING YOUR WORLD

mobile
easykey

SCANIA
R 450
HG DM 225

MANITOU 160 ATJ
160 ATJ
MANITOU
85918



MANITOU
HANDLING YOUR WORLD

mobile
easykey®

dominick

+++
HIGH CAPACITY
+++

HG-JD 310

MAN
HANDLING YOU
easy access



RICHTER+LANG
Lichtmaschinen

RICHTER+LANG
Lichtmaschinen







160 ATJ+

MANITOU

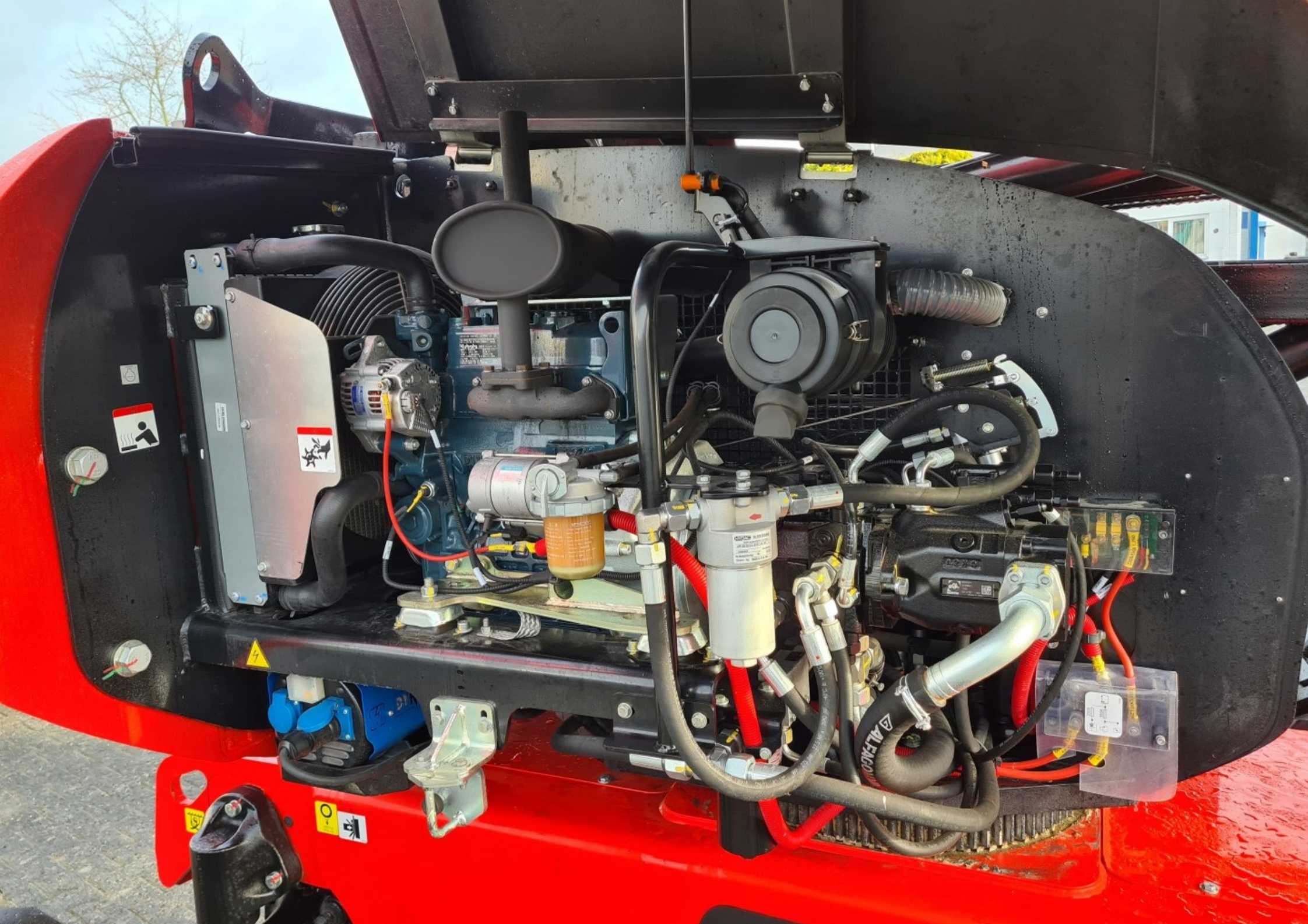
35818

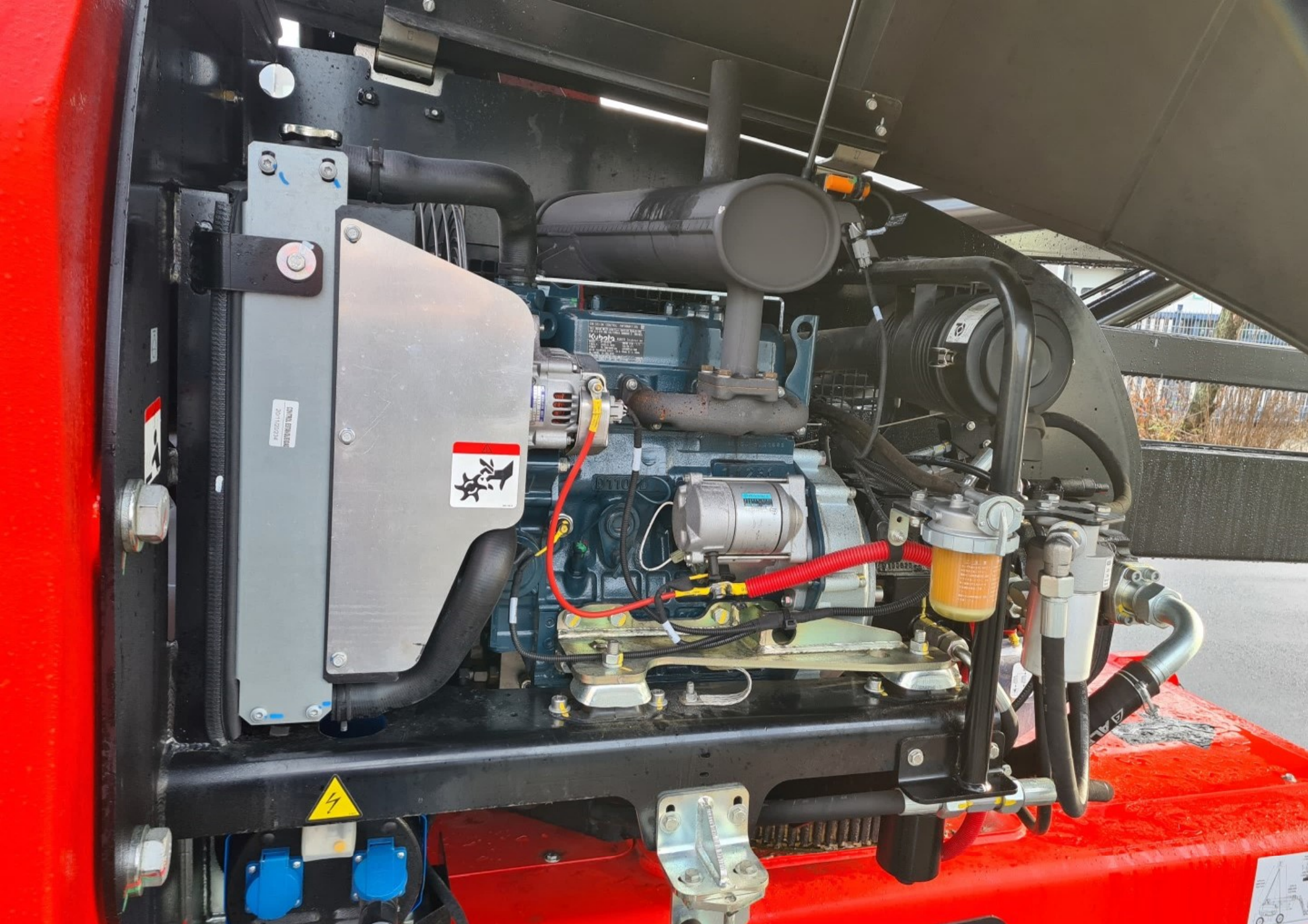
MANITOU

160 ATJ+

MANITOU







DATE OF SERVICE
2011/05/24



D110



EMISSION CONTROL INFORMATION



THIS ENGINE MEETS 2020 Tier4 EMISSION REGULATIONS
FOR U.S. EPA AND CALIFORNIA NONROAD CI ENGINES.

Kubota KUBOTA Corporation

MODEL : D1105-EF02 ENGINE DISP. : 1.1L

FAMILY : LKBXL01.5BCB ECS: EM, IFI

POWER : 18.2kW/3000rpm CATEGORY: 8-19kW

VALVE CLEARANCE (COLD) : IN 0.165mm EX 0.165mm

INJ. TIMING: 19 DEG BTDC

ULTRA LOW SULFUR DIESEL FUEL ONLY 2020/05

CONTACT KUBOTA FOR FUEL SETTING. 1H478-3





 **DYNASET**

Druckhalter
max. 20 BAR
max. 100°C
max. 1000 PSI
max. 1000 PSI



domnick
+ müller

MANITOU 160 ATJ+

MANITOU

SIE WERDEN UNS
MIT FINDEN

MANITOU





HAND
HANE

mobile
easy

HIGH CAPACITY



5818

52447667

STOP

STOP

RESET

MANITOU





35818

HIGH CAPACITY

