

Kalmar DRF100-54S6
Lifting data
DRF100-54S6

Lifting capacity at load centre L4, rated – at max. lifting height (kg)	10000 – 10000
Lifting capacity at load centre L5, rated – at max. lifting height (kg)	9000 – 9000
Lifting speed, unloaded – at 70% of rated load (m/s)	0,42 – 0,38
Lowering speed, unloaded – at rated load (m/s)	0,40 – 0,40

Driving data

Travelling speed forward, unloaded – at rated load (km/h)	29 – 27
Travelling speed backward, unloaded – at rated load (km/h)	29 – 27
Gradeability at 2 km/h, unloaded – at rated load (%)	27 – 21
Max. gradeability, unloaded – at rated load (%)	33 – 26
Drawbar pull, max (kN)	125
Stability according to EN 1459	

Weight of truck

Service weight (kg)	39000
Axle load front at load centre L4, unloaded – at rated load (kg)	22300 – 38600
Axle load front at load centre L5, unloaded – at rated load (kg)	24100 – 40700
Axle load front at driving position according to EN 1459 and rated load (kg)	36200
Axle load rear at load centre L4, unloaded – at rated load (kg)	16700 – 10400
Axle load rear at load centre L5, unloaded – at rated load (kg)	14900 – 7300
Axle load rear at driving position according to EN 1459 and rated load (kg)	12800

Engine

Manufacturer – type designation	Volvo TAD760VE
Fuel – type of engine	Diesel – 4 stroke
Number of cylinders – compression (cm ³)	180 – 2200
Power according to ISO 3046 – at revs (kW/rpm)	1100 – 1500
Torque according to ISO 3046 – at revs (Nm/rpm)	6 – 18.1:1
Alternator, type – power (W)	AC – 1920
Starting battery, voltage – capacity (V – Ah)	2×12 – 140
Fuel consumption, normal driving (l/h)	15

Transmission

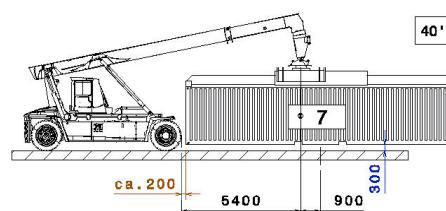
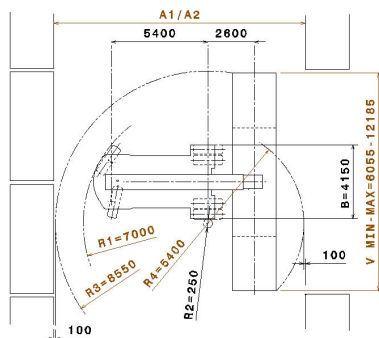
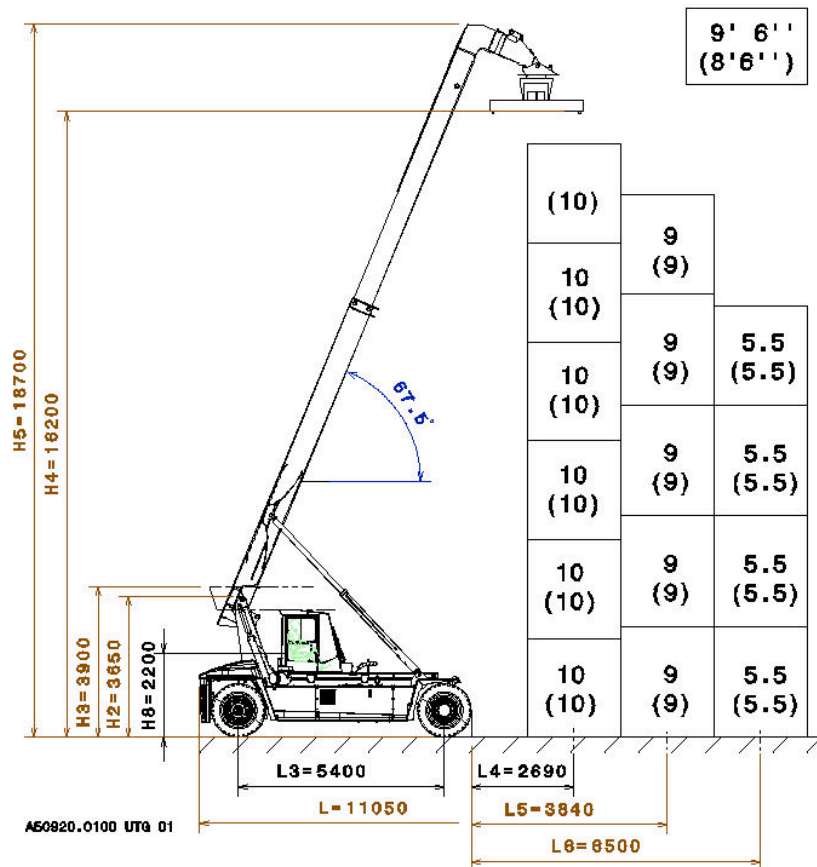
Manufacturer – type designation	Dana – 340FTE17311
Clutch, type	Torque converter
Gearbox, type	Powershift
Number of gears, forward – reverse	3 – 3
Driving axle, type	Differential and hub reduction

Wheels

Type	Pneumatic
Dimension, front – rear (inch)	14.00×24 – 14.00×24, PR24 E3
Number of wheels, front – rear (*driven)	4* – 2
Pressure (MPa)	1,0

Miscellaneous

Steering system, type – maneuvering	Servo assisted – Steering wheel
Service brake system, type – affected wheels	Wet disc brakes – Drive wheel
Parking brake system, type – affected wheels	Spring brake – Drive wheel
Max. hydraulic pressure (MPa)	22,0
Noise level according to DIN 45635 part 36, cabin (db(A))	70
Noise level according to 2000/14/EC, outside (db(A))	–
Fuel volume (l)	525
Hydraulic oil volume (l)	425
Overload protection	Electronic



Dimensions

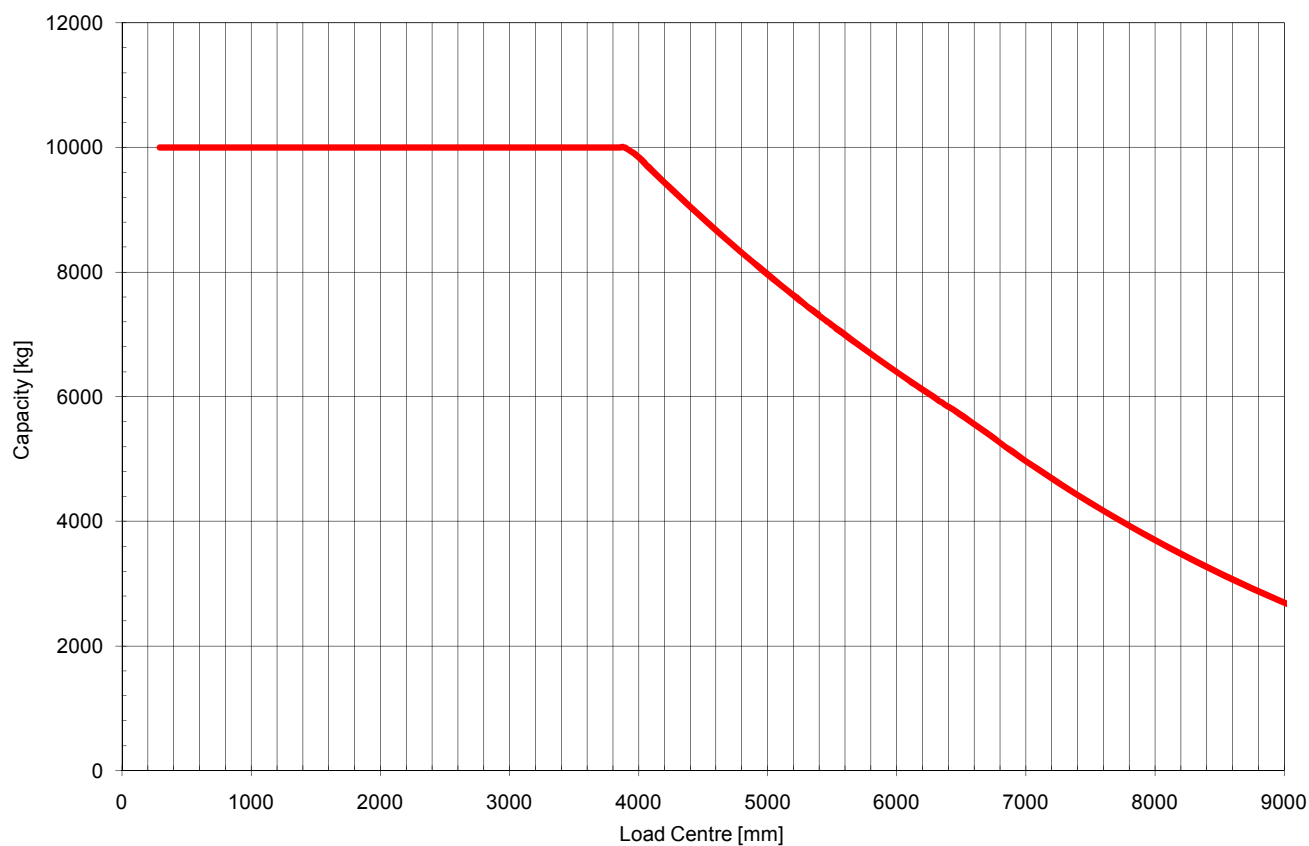
DRF100-54S6		
Beam angle, max (°)	α	67,5
Attachment rotation, CW – CCW (°)	B	195 – 105
Min. aisle width for 90° stacking with 20' containers (mm)	A1	11050
Min. aisle width for 90° stacking with 40' containers (mm)	A2	14100
Sideshift \pm (mm)	V1	± 1000
Track (c-c), front – rear (mm)	S	3285 – 2600
Ground clearance, min. (mm)		250

The design and materials specification are subject to alternation without prior notice.
Tolerances according to K-standard 95430.0008/0009



Cargotec improves the efficiency of cargo flows on land and at sea – wherever cargo is on the move.
Cargotec's daughter brands Hiab, Kalmar and MacGregor are recognised leaders in cargo and load handling solutions around the world. Cargotec's global network is positioned close to customers and offers extensive services that ensure the continuous, reliable and sustainable performance of equipment.
Cargotec's class B shares are quoted on the NASDAQ OMX Helsinki. www.cargotec.com

Cargotec Sweden AB
Torggatan 3
SE-340 10, Lidhult, Sweden
tel. +46 372 260 00
fax +46 372 263 90
www.cargotec.com



Cargotec improves the efficiency of cargo flows on land and at sea – wherever cargo is on the move.

Cargotec's daughter brands Hiab, Kalmar and MacGregor are recognised leaders in cargo and load handling solutions around the world. Cargotec's global network is positioned close to customers and offers extensive services that ensure the continuous, reliable and sustainable performance of equipment.

Cargotec's class B shares are quoted on the NASDAQ OMX Helsinki. www.cargotec.com



Cargotec Sweden AB

Torggatan 3

SE-340 10, Lidhult, Sweden

tel. +46 372 260 00

fax +46 372 263 90

www.cargotec.com