



## TECHNICAL INFORMATION REACH STACKER

Mod. **FERRARI 178**

### CHASSIS

All welded box type. Torsion resistant structure. Low center of gravity.

### ENGINE

Mercedes Benz Mod. OM 442  
Naturally aspirated.  
Lowest fuel consumption and best performances.

### TRANSMISSION

CLARK 34000 - Integrated torque converter and power shift - 4 Speeds forward and 4 speeds reverse

### FRONT AXLE

Hub reduction with crown wheel and pinion.  
Epicyclical reduction.

### REAR AXLE

Articulating axle with double acting single cylinder.

### POWERED STEERING

Full hydrostatic steering system (Orbitrol). Steering wheel in cab.

### BRAKING SYSTEM

Service brakes by multiple discs in oil bath acting on front wheels with cooling system. Parking and emergency braking system by release spring operated by manual lever in cab.

### HYDRAULIC SYSTEM

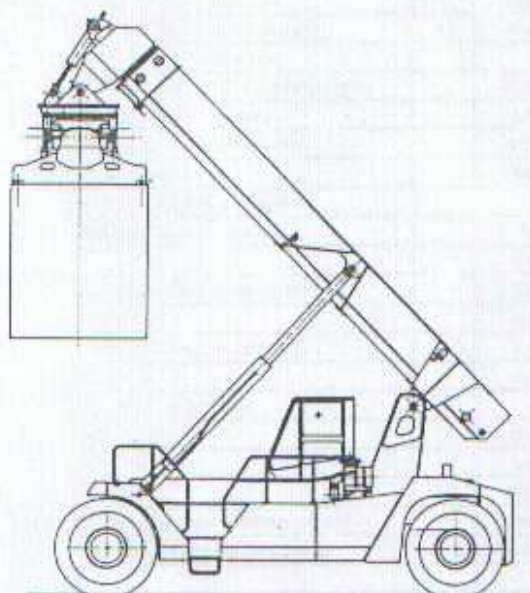
Powerfull. Reliable. 2 geared pumps controlling: lifting, telescoping, steering, rotation and side shifting. Low pressure system for maximum reliability. Joy sticker. 2 lifting speeds: one normal on laden and one fast on empty conditions.

### ELECTRICAL SYSTEM

The most reliable and easy to service.  
24 V. - Two 12 V. batteries of low maintenance type. High performance alternator.

### BOOM

High torsion. High quality steel. New design - One basic section and one telescopic section.



### DRIVER'S CAB

The most comfortable and ergonomic. Sound proof. Fitted on silent blocks to reduce vibrations. Best all round visibility. Safety glasses. Adjustable operator seat. Front and roof wipers.

### LIQUID CAPACITIES

|                |     |     |
|----------------|-----|-----|
| Fuel           | lt. | 700 |
| Cooling system | lt. | 75  |
| Hydraulic oil  | lt. | 800 |
| Drive axle     | lt. | 50  |
| Gear box       | lt. | 55  |
| Engine oil     | lt. | 20  |

### INSTRUMENTS

Engine water thermometer. Engine oil pressure manometer. Transmission oil thermometer and oil pressure manometer. Fuel gauge. Hourmeter. RPM meter.

### WARNING LIGHTS

Air filter clogging. Brake oil filter clogging. Transmission oil clogging. Pilot oil filter clogging. Transmission oil high temperature. Brake oil low pressure and high temperature. Engine oil low pressure. Direction warning lights. Spot lights. Low battery indicator. Brake applied. Ambra beacon. Working light. Emergency lights. Fuel low level.

### MISCELLANEOUS

#### SPREADER:

Highest strength steel. Compact and precise. Telescoping from 20' to 40'. All functions controlled from cab. Side mechanical tilting. Rotation -95°+185°. Damping. Safety sensors on four corners -

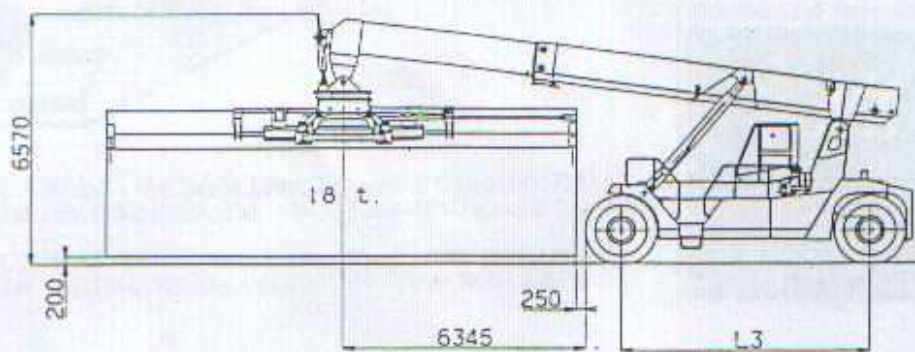
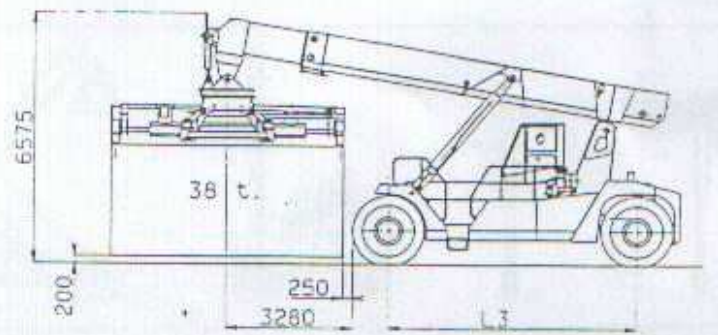
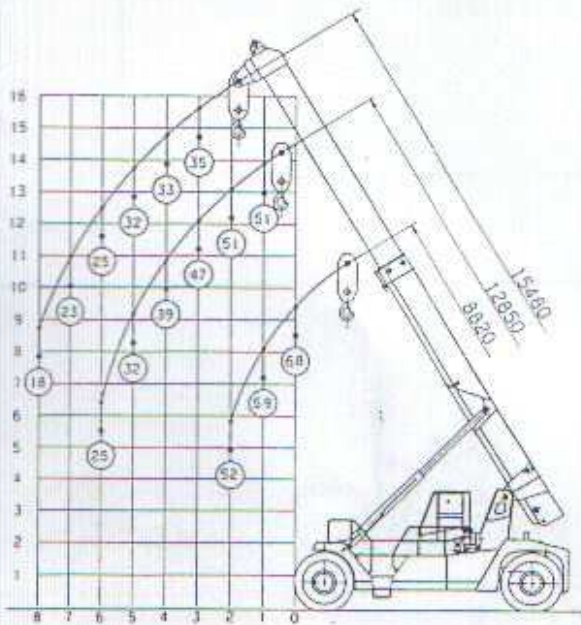
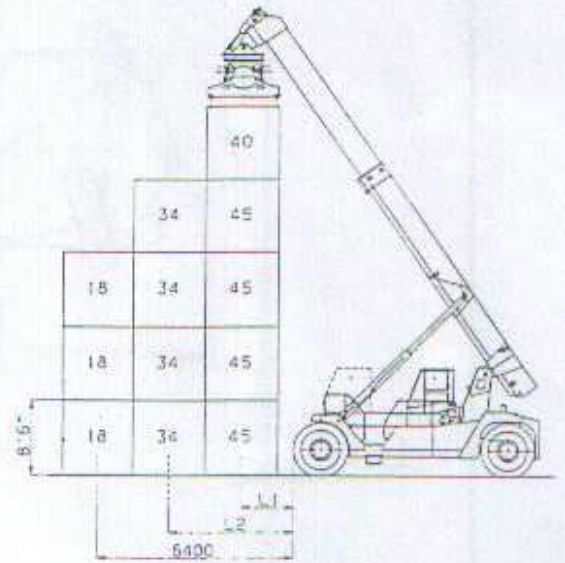
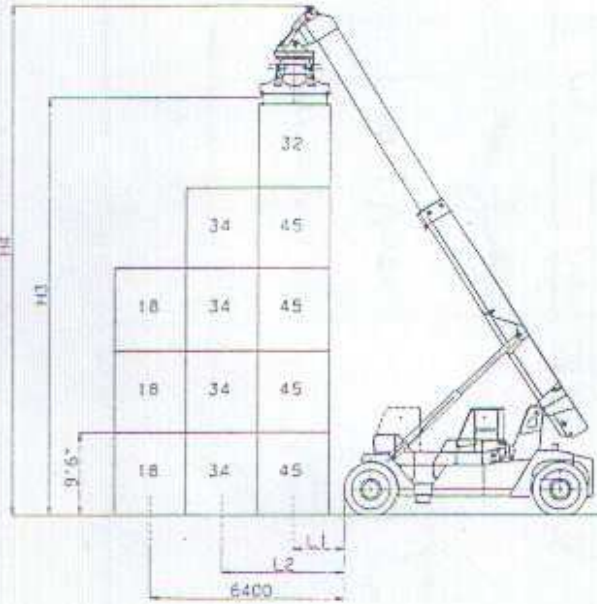
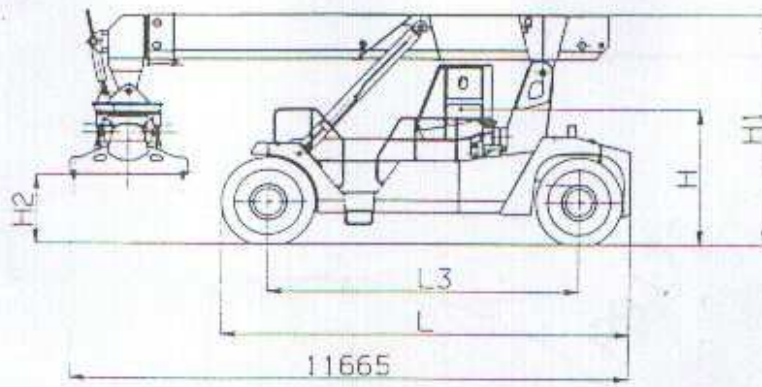
Heater - Rear view mirror - Front lights - Rear lights - Working lights - Ambra beacon - Front and

rear direction lights - Braking lights - Reverse buzzer - Anti-reverse safety system - Overloading safety system.

### OPTIONS

Hydraulically sliding cab - Electronic speed control - Aircon in cab. - 12 V. plug for radio system - Extinguisher - Rear and upper glass defroster - 120 A. Alternator - Electronic overloading system - Integral spreader with piggy back - Fuel heating system.

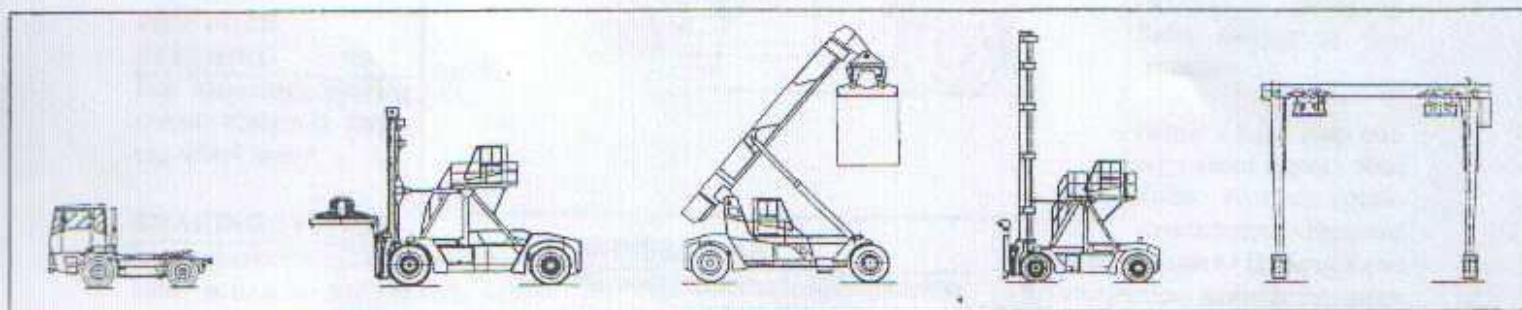
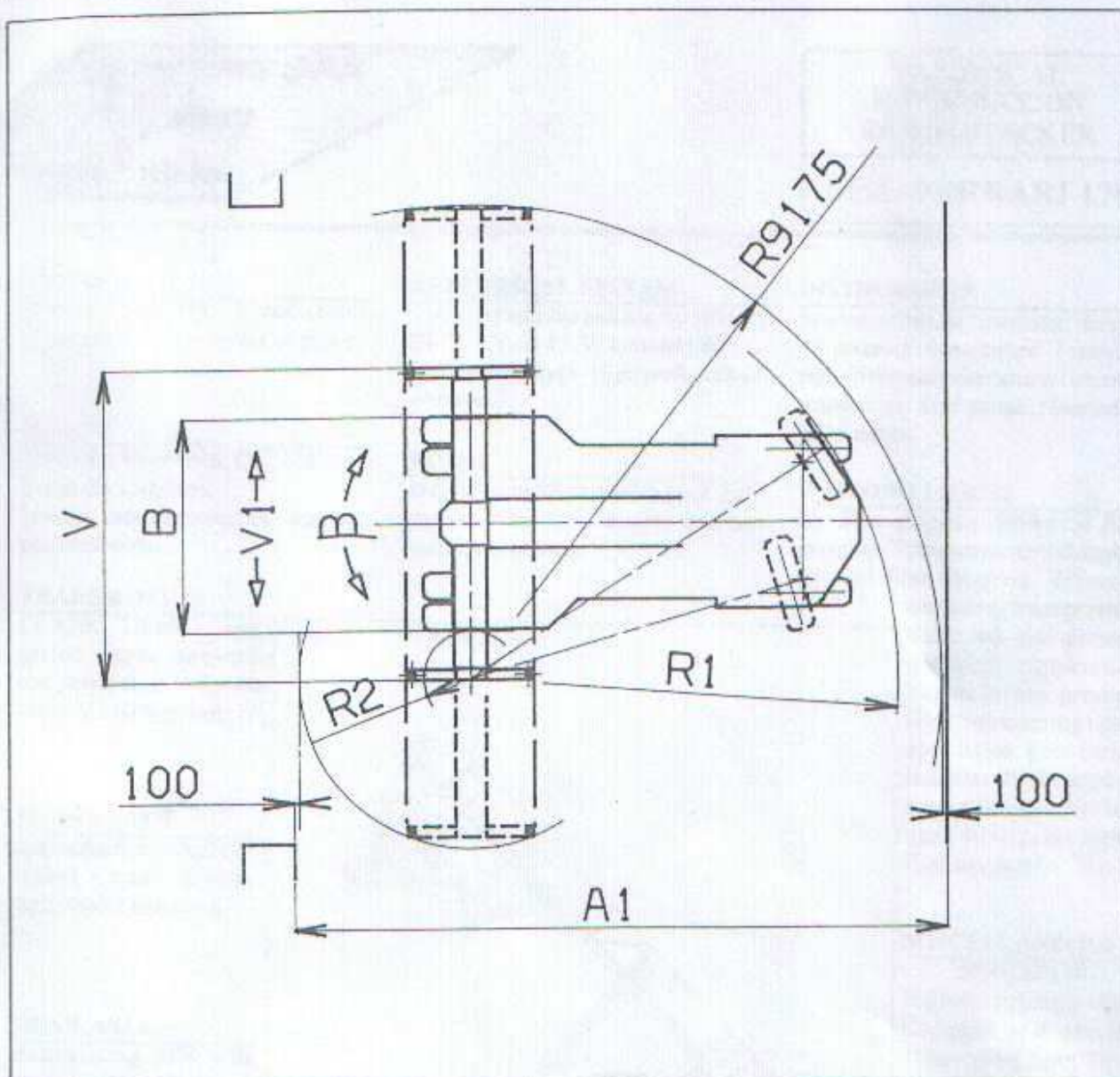






|                            |                             |                                   |       |         |   |
|----------------------------|-----------------------------|-----------------------------------|-------|---------|---|
| SPECIFICATION              | 01 Manufacturer             |                                   |       |         | CVS                                     |
|                            | 02 Model                    |                                   |       |         | FERRARI 178                             |
|                            | 03 Lifting capacity         | First Row/Second Row              |       | Kg      | 45000/34000                             |
|                            | 04 Load Center              | First Row/Second Row              | L1/L2 | mm.     | 1670/3720                               |
|                            | 05 Power unit               |                                   |       |         | Diesel engine                           |
|                            | 06 Steering                 |                                   |       |         | Steering wheel in the cab               |
|                            | 07 Tyre type                | Front / Rear                      |       |         | Pneumatic                               |
|                            | 08 Wheels                   | Number at Front/Rear (*=driven)   |       |         | 4*/2                                    |
| DIMENSIONS                 | 09 Lifting Height           | Under Spreader - First Row        | H3    | mm.     | 14700                                   |
|                            | Width of Spreader           | 20 Ft.                            | V     | mm.     | 6060                                    |
|                            |                             | 40 Ft.                            | V     | mm.     | 12192                                   |
|                            |                             |                                   |       |         |   |
|                            | Side Tilting                | Mechanical +-                     |       | Deg.    | 4                                       |
|                            | Rotation                    | Hydraulic +-                      | B     | Deg.    | -95+185                                 |
|                            | Side shifter                | Max +-                            | V1    | mm.     | 800                                     |
|                            | 14 Boom Angle               | Min / Max                         |       | Deg.    | 0/60                                    |
|                            | 15 Overall dimensions       | Length without boom               | L     | mm.     | 8530                                    |
|                            | 16                          | Width                             | B     | mm.     | 4150                                    |
|                            | 17                          | Boom height, Min.                 | H1    | mm.     | 4800                                    |
|                            | 18                          | Boom height, Max                  | H4    | mm.     | 17895                                   |
|                            | 19                          | Height - Top of Cab               |       | mm.     | 3740                                    |
|                            | 20                          | Seat height                       | H     | mm.     | 2680                                    |
|                            | 20/A                        | Min. dist. spreader from ground   | H2    | mm.     | 1430                                    |
|                            | 21 Turning radius           | Inner/Outer                       | R1/R2 | mm.     | 8210/740                                |
|                            | 22 Distance from front axle | Center to load, first row         |       | mm.     | 2600                                    |
|                            | 23 Aisle for 90° stacking   | Incl. 200 mm. safety margin       | A1    | mm.     | 12700                                   |
| PERFORMANCE                | Stability                   | DIN 15018-1 (Yes/No)              |       |         | Yes                                     |
|                            | 24 Speeds                   | Travelling F. & R. Laden/Unladen  |       | km/h    | 19/23                                   |
|                            | 25                          | Lifting Laden/Unladen             |       | m/s     | 0,2/0,2                                 |
|                            | 26                          | Lowering Laden/Unladen            |       | m/s     | 0,29/0,29                               |
|                            | 28 Drawbar pull             | Max - Laden                       |       | kN      | 227                                     |
|                            | 29 Gradeability             | Cont. at 2 Km/h - Laden           |       | %       | 14                                      |
|                            | 30                          | Max at 0 km/h - Laden             |       | %       | 18                                      |
| WEIGHTS                    | 32 Gross vehicle weight     |                                   |       | Kg.     | 72500                                   |
|                            | 33 Axle load - Front        | Unladen - horizontal boom         |       | Kg.     | 35500                                   |
|                            |                             | Laden at L1                       |       | Kg.     | 98550                                   |
|                            | 34 Axle load - Rear         | Unladen - horizontal boom         |       | Kg.     | 37000                                   |
|                            |                             | Laden at L1                       |       | Kg.     | 18950                                   |
| TYRES<br>BRAKES<br>CHASSIS | 35 Tyres                    | Number - Front/rear               |       |         | 4/2                                     |
|                            | 36                          | Size - Front                      |       | ins.    | 18.00-33/36                             |
|                            | 37                          | Size - Rear                       |       | ins.    | 18.00-33/36                             |
|                            | 38 Wheelbase                |                                   | L3    | mm.     | 6500                                    |
|                            | 39 Track                    | Between centres - driven wheels   |       | mm.     | 3030                                    |
|                            | 40 Ground clearance         | Mid-way along the wheelbase       |       | mm.     | 690                                     |
|                            |                             |                                   |       |         |   |
|                            | 42 Foot brake system        | Type/brake wheels                 |       |         | Multiple discs in oil bath/Driven Wheel |
|                            | 43 Parking brake            | Type/brake wheels                 |       |         | Spring brakes/Driven wheels             |
|                            | STEERING SYSTEM             | Type                              |       |         | Hydrostatic                             |
| DRIVING<br>SYSTEM          | 49 Engine                   | Manufacturer - Type               |       |         | Mercedes Benz Mod. 442                  |
|                            | 50                          | Rating - DIN 6271                 |       | kW/(hp) | 222(300)                                |
|                            | 51                          | Rated Speed                       |       | RPM     | 2100                                    |
|                            |                             | Peak Torque - at engine speed     |       | Nm/min  | 1079/1000                               |
|                            | 52                          | Number Cylinders - swept volume   |       | cm3     | 8V/15078                                |
|                            |                             | Compression Ratio                 |       |         | 16.8:1                                  |
|                            | 53                          | Fuel Consumption (Average)        |       | l/h     | 18                                      |
|                            | Alternator                  | Type - Rating                     |       | A       | AC - 80                                 |
|                            | Starting Batteries          | Voltage - Capacity                |       | V/Ah    | 2 x 12 V -155                           |
|                            | 54 Drive Axle               | Type                              |       |         | With double reduction                   |
|                            | 55 Gear Box                 | Type-number of gears forward/rev. |       |         | Clark - 4/4                             |
|                            | 56 Clutch                   | Clutch type                       |       |         | Torque converter                        |
|                            | 57 Hydraulic pressure       | For attachments                   |       | Bar     | 140                                     |
|                            | 58 Sound Level              | Overhead guard/Cab average        |       | dB(A)   | 85/75                                   |





The illustrations and data contained in this brochure are not binding. The manufacturer reserves the right to make changes for any reason while not altering the primary specifications.



HEAD  
OFFICE

C.V.S. SpA - Via Emilia 29010 Roveleto di Cadeo (PC) ITALY  
Tel. +39.523-509026 - Fax. +39.523-500439 - Telex 530530 CVSI

ASIA PACIFIC  
OFFICE

C.V.S. AP - #04-17 Prince Edward Road. - 0207 SINGAPORE  
Tel. +65.2201338 - Fax. +65.2201319 - Telex 36901 IOSPL

Distributed & Serviced by:

**MAFO**

Maschinenhandel Forst  
Robert H. Huthloff GmbH

Rudolf-Diesel-Straße 2, 76694 Forst  
Tel. 07251/9712-0, Fax 07251/85802