



TECHNICAL INFORMATION

REACH STACKER

Mod. FERRARI 148-5/6

CHASSIS

All welded box type. Highest strength. Torsion resistant structure. *

ENGINE

VOLVO TD 730 ME. Low pollution level.

Lowest fuel consumption and best performances.

TRANSMISSION

Integrated torque converter and power shift - 3 Speeds forward and 3 speeds reverse

FRONT AXLE

Epicyclic hub reduction plus central reduction (bevel gear and pinion).

REAR AXLE

Articulating axle with double acting single cylinder.

POWERED STEERING

Full hydrostatic steering system (Orbitrol). Steering wheel in cab.

BRAKING SYSTEM

Service brakes acting on front wheels by multiple discs in oil bath with cooling system. Parking and emergency braking system by release spring operated by manual lever in cab.

HYDRAULIC SYSTEM

Powerfull. Reliable. Pumps feeding: lifting, telescoping steering and spreader. Low pressure system for maximum reliability.

Cooling system by means of electrical fan and air-oil cooler.

ELECTRICAL SYSTEM

The most reliable and easy to service. 24 V. - Two 12 V. batteries of low maintenance type. High performance alternator.

BOOM

High torsion. High quality steel. New design - One basic section and one telescopic section.

INSTRUMENTS

Engine water thermometer. Engine oil pressure manometer. Speedometer. Transmission oil thermometer and oil pressure manometer. Fuel gauge. Hourmeter.

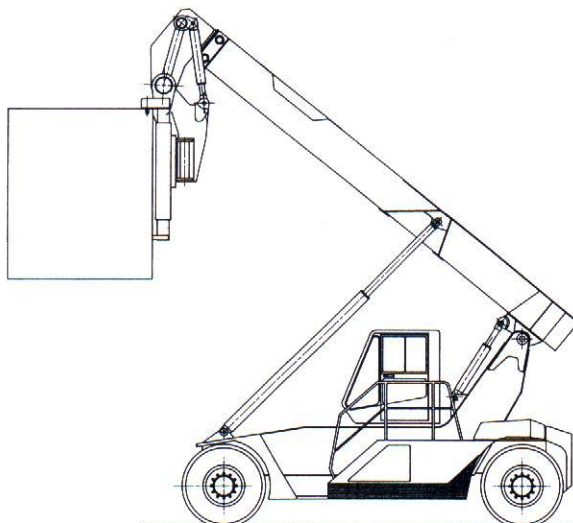
WARNING LIGHTS

Air filter clogging. Brake oil filter clogging. Transmission oil high temperature. Brake oil low pressure and high temperature. Parking brake applied. Engine oil low pressure. Spot lights. Low battery indicator. Emergency lights. Fuel low level.

MISCELLANEOUS

SIDE SPREADER:

High quality steel. Compact and precise. Telescoping from 20' to 40'. All functions controlled from cab. Safety sensors on four corners -



DRIVER'S CAB

The most comfortable and ergonomic. Sound proof. Fitted on silent blocks to reduce vibrations. Best all round visibility. Safety glasses. Adjustable operator seat. Front and roof wipers.

LIQUID CAPACITIES

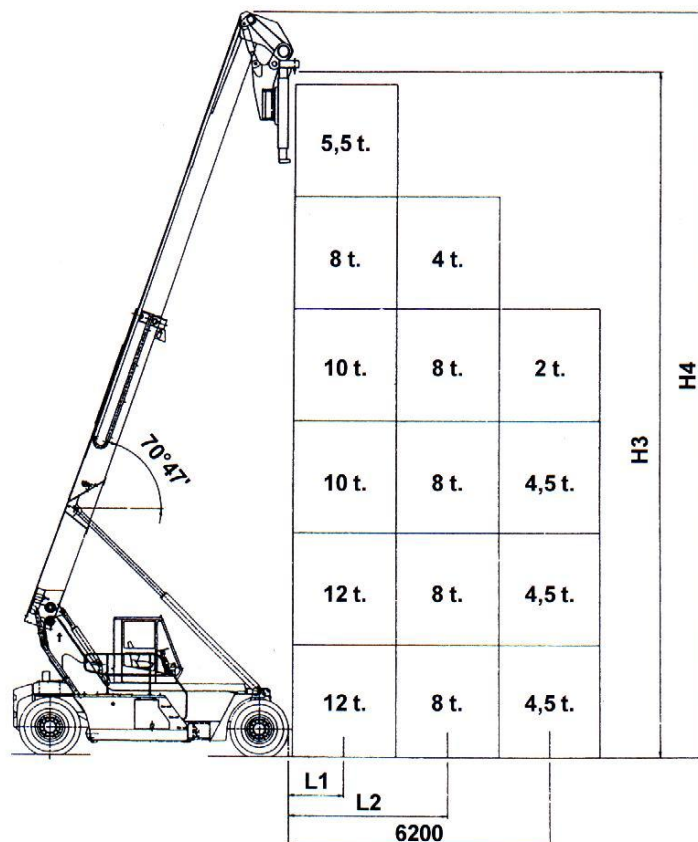
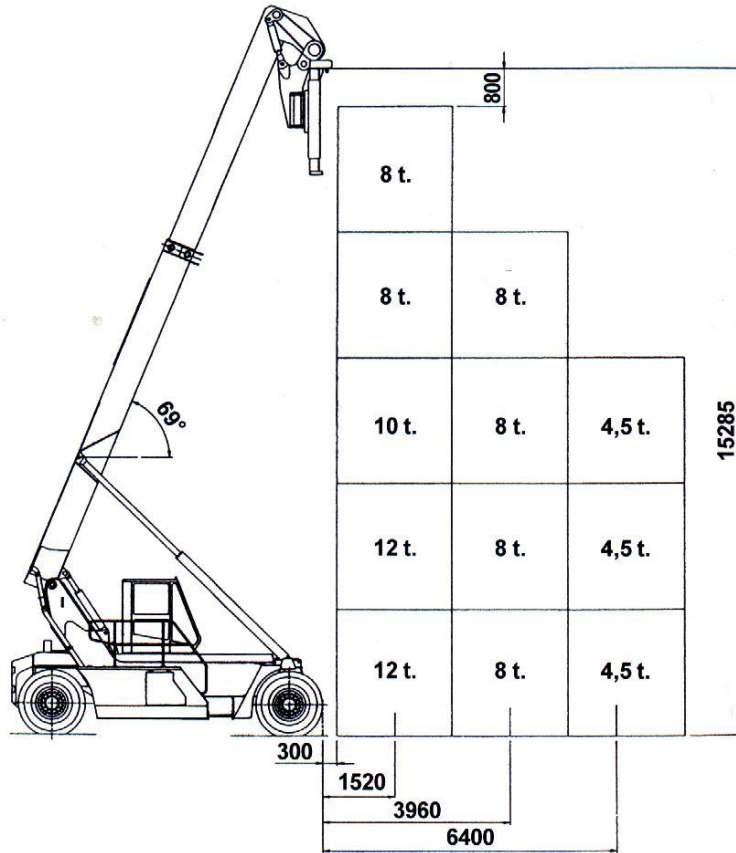
Fuel	lt.	360
Cooling system	lt.	65
Hydraulic oil	lt.	460
Drive axle	lt.	43
Gear box	lt.	40
Engine oil	lt.	29

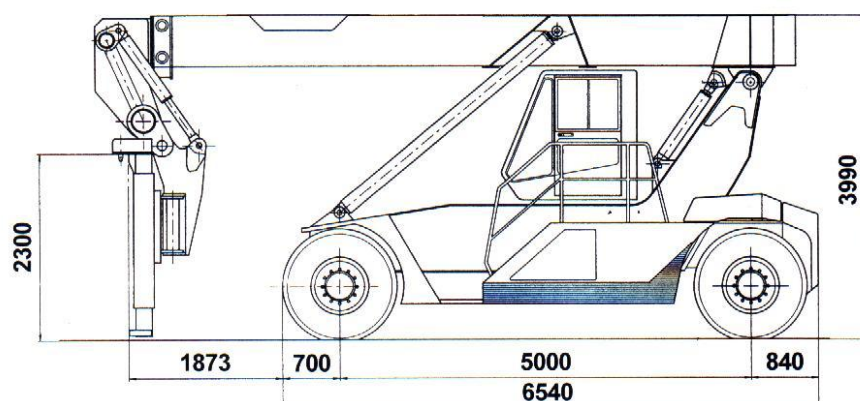
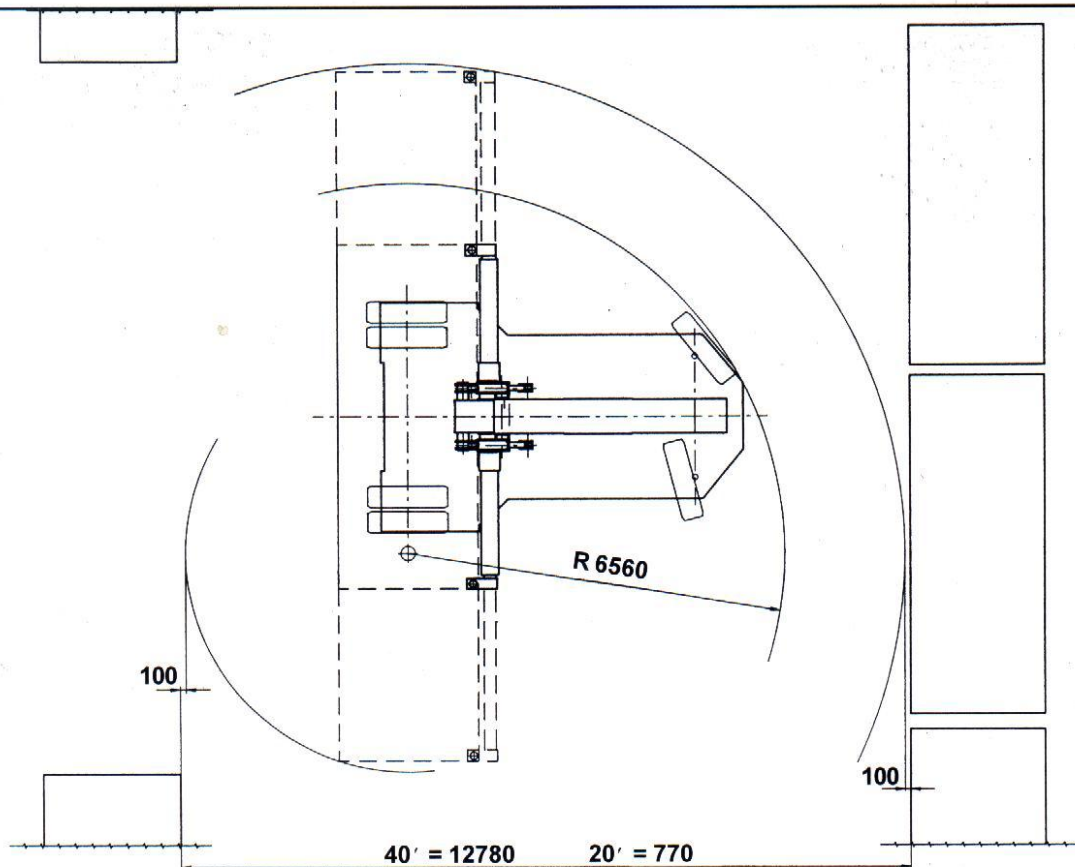
Heater - Rear view mirror - Front lights - Rear lights - Working lights - Ambra beacon - Front and rear direction lights - Stop lights - Reverse buzzer - Anti-reverse safety system -

OPTIONS

Electronic transmission control - Aircon in cab - 12 V. plug for radio system - Extinguisher - Rear and upper glass defroster - Engine water heating system - Vertical lifting - Tilting cab.

SPECIFICATION	01 Manufacturer				CVS
	02 Model				FERRARI 148-5/6
	03 Lifting capacity	First Row/Second Row		Kg.	12000/8000
	04 Load Center	First Row/Second Row	L1/L2	mm.	1520/3960
	05 Power unit				Diesel engine
	06 Steering				Steering wheel in the cab
	07 Tyre type	Front / Rear			Pneumatic
	08 Wheels	Number at Front/Rear (*=driven)			4*/2
DIMENSIONS	09 Lifting Height	Under Spreader - First Row	H3	mm.	15285/15849
	Width of Spreader	20 Ft.	V	mm.	6060
		40 Ft.	V	mm.	12192
	Front Tilting	Hydraulic +/-		Deg.	5
	Rotation	Hydraulic + -	B	Deg.	10
	Side shifting	Max + -	V1	mm.	500
	14 Boom Angle	Min / Max		Deg.	0 / 69
	15 Overall dimensions	Length without spreader	L	mm.	6540
	16	Width	B	mm.	4100
	17	Boom height, Min.	H1	mm.	3990
	18	Boom height, Max	H4	mm.	15285
	19			mm.	
	20	Seat height	H	mm.	2320
	20/A	Min. dist. spreader from ground	H2	mm.	2300
	21 Turning radius	Inner/Outer	R1/R2	mm.	360/6950
	22 Distance from front axle	Center to load, first row		mm.	3790
	23 Aisle for 90° stacking	Incl. 200 mm. safety margin	A1	mm.	12780
PERFORMANCE	Stability	DIN 15018-1 (Yes/No)			Yes
	24 Speeds	Travelling F. & R. Laden/Unladen		km/h	25/26
	25	Lifting		m/s	0.4
	26	Lowering		m/s	0.4
	28 Drawbar pull	Max - Laden		kN	153
	29 Gradeability	Cont. at 2 Km/h - Laden		%	27
	30	Max at 0 km /h - Laden		%	39
WEIGHTS	32 Gross vehicle weight			Kg.	34500
	33 Axle load - Front	Unladen		Kg.	19500
		Laden L1		Kg.	28500
	34 Axle load - Rear	Unladen		Kg.	15000
		Laden L1		Kg.	14100
TYRES BRAKES CHASSIS	35 Tyres	Number - Front/rear			4/2
	36	Size - Front		ins.	14.00-24
	37	Size - Rear		ins.	14.00-24
	38 Wheelbase		L3	mm.	5000
	39 Track	Between centres - driven wheels		mm.	3290
	40 Ground clearance	Mid-way along the wheelbase		mm.	350
	42 Foot brake system	Type/brake wheels			Multiple discs in oil bath/Driven Wheels
	43 Parking brake	Type/brake wheels			Spring brake on the axle
STEERING SYSTEM	Type				Hydrostatic
DRIVING SYSTEM	49 Engine	Manufacturer - Type			VOLVO TD 730 ME
	50	Rating - DIN 6271		kW/(hp)	150(204)
	51	Rated Speed		RPM	2400
		Peak Torque - at engine speed		Nm/min	800/1400
	52	Number Cylinders - displacement		cm3	6/6730
		Compression Ratio			17.7:1
	53	Fuel Consumption (Average)		l/h	15
	Alternator	Type - Rating		A	120
	Starting Batteries	Voltage - Capacity		V/Ah	2 x 12 V -155
	54 Drive Axle	Type			With double reduction
	55 Gear Box	Type-number of gears forward/rev.			Clark - 3/3
	56 Clutch	Clutch type			Torque converter
	57 Hydraulic pressure	For attachments		Bar	140
	58 Sound Level	Overhead guard/Cab average		dB(A)	85/75





The illustrations and data contained in this brochure are not binding. The manufacturer reserves the right to make changes for any reason while not altering the primary specifications



C.V.S. Spa - Via Emilia 29010 Roveleto di Cadeo (PC) ITALY
Tel. +39.523-503511 - Fax. +39.523-500439
Email: info.mktg@cvsferrari.com

Distributed & Serviced by:

MAFO NRW GmbH

Lise-Meitner-Str. 9

40764 Langenfeld

Tel.: 02173/75571

Fax.: 02173/856512

Mobil: 0171/2889920