



IMPORTANT ENGINE INFORMATION

**VOLVOPENTA** AB Volvo Penta, Sweden

ENGINE FAMILY: 1VPXL06.7ABA -DISPLACEMENT 6.7 -VALVE LASH INT 0.40 mm  
 ENGINE MODEL TWD 731VE EXHAUST EMISSION EXH 0.55 mm  
 CONT SYST EM SPL TC CAC

VP 3835590  
FEL NOX g/kWh

ENGINE CODE	POWER kW/rpm	FUEL RATE mm <sup>3</sup> /stroke	STATIC TIMING deg bef T D.C	LOW IDLE SPEED rpm
II	167/2400	104 EC 100 US	12	625-675

EU THIS ENGINE CONFORMS TO STAGE 1 OF THE NON ROAD MOBILE MACHINERY DIRECTIVE  
 DIRECTIVE 97/68/EC APPROVAL NO. e5\*97/68AA\*0012\*00

USA THIS ENGINE CONFORMS TO 2001 U S EPA REGULATIONS LARGE NON ROAD COMPRESSION-  
 IGNITION ENGINES THIS ENGINE IS CERTIFIED TO OPERATE ON DIESEL FUEL ONLY.

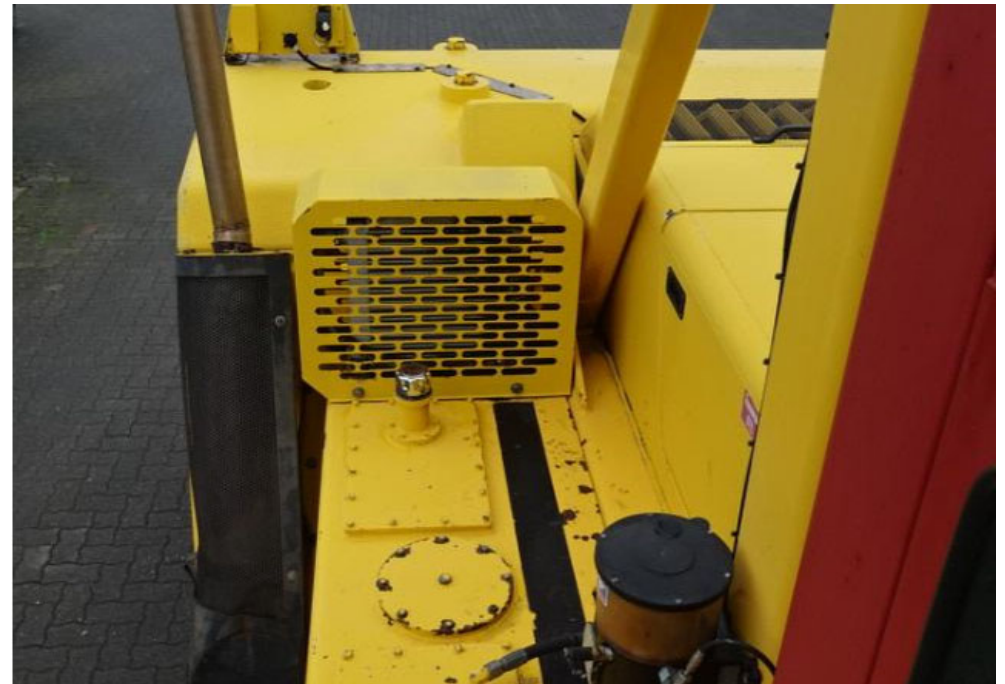
CALIFORNIA THIS ENGINE CONFORMS TO 2001 U S EPA REGULATIONS FOR HEAVY-DUTY  
 OFF-ROAD DIESEL CYCLE ENGINES AS APPLICABLE












**C.V.S. SpA**  
 29010 ROVELETO DI CADEO  
 PIACENZA - ITALY  
 Via Emilia - Telefono 0523 503511  
 Telex 530530 - Fax 0523 500439



MODEL FL2814 SERIAL N. A26228  
 Modello Matricola N.


NOMINAL POWER 175 kW  
 Potenza nominale

YEAR 2002 UNLADEN MASS 33700  
 Anno Massa a vuoto

RATED CAPACITY / Portata nominale  
 Q=22000 kg D=1200 mm H=5000 mm

ACTUAL CAPACITY WITH FORKS  
 Portata effettiva con forche

Q1 (kg)	<u>22000</u>		
D (mm)	<u>1200</u>		
H1 (mm)	<u>4000</u>		
Q2 (kg)			
D (mm)			
H2 (mm)			



FOR OTHER CAPACITIES, ASK C.V.S. SpA  
 Per altre portate rivolgersi a C.V.S. SpA

