

tractors  
fork lift trucks  
empty container handling  
reach stackers ►  
straddle carriers  
steel coil handling  
pick & carry crane

products



C.V.S. spa

via Emilia, 20/22  
29010 Roveleto di Cadeo  
Piacenza - Italy

tel. +39.0523.503511  
fax +39.0523.500439

[www.cvsferrari.com](http://www.cvsferrari.com)  
[info.mktg@cvsferrari.com](mailto:info.mktg@cvsferrari.com)



## Technical Information

# Reach Stackers

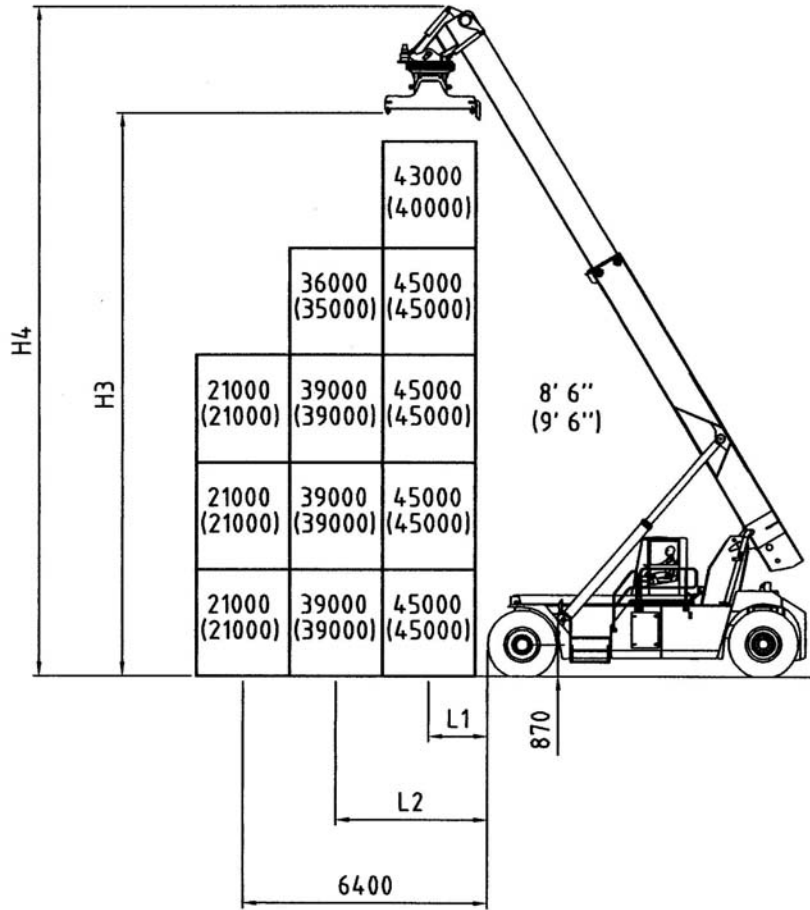
**FERRARI**  
**F 479**

|                                     |                                  |                                           |                 |         |                               |                      |                         |
|-------------------------------------|----------------------------------|-------------------------------------------|-----------------|---------|-------------------------------|----------------------|-------------------------|
| <b>SPECIFICATION</b>                | <b>01 Manufacturer</b>           |                                           |                 |         | CVS                           | CVS                  | CVS                     |
|                                     | <b>02 Model</b>                  |                                           |                 |         | <b>FERRARI 479.5</b>          | <b>FERRARI 479.6</b> | <b>FERRARI 479.5 PB</b> |
|                                     | <b>03 Lifting capacity</b>       | First Row/Second Row                      |                 | Kg.     | 45000/39000                   | 45000/39000          | 45000/34000             |
|                                     | <b>03 Lifting capacity</b>       | under spreader + Piggy Back               |                 | Kg.     | 45000                         | 45000                | 45000                   |
|                                     | <b>04 Load Center</b>            | First Row/Second Row                      | L1/L2           | mm.     | 1780/3850                     | 1780/3850            | 1780/3850               |
|                                     | <b>05 Power unit</b>             |                                           |                 |         | Diesel engine                 | Diesel engine        | Diesel engine           |
|                                     | <b>06 Steering</b>               |                                           |                 |         | Steering wheel in the cab     |                      |                         |
|                                     | <b>07 Tyre type</b>              | Front / Rear                              |                 |         | Pneumatic                     | Pneumatic            | Pneumatic               |
| <b>08 Wheels</b>                    | Number at Front/Rear (*=driven)  |                                           |                 | 4*/2    | 4*/2                          | 4* / 2               |                         |
| <b>DIMENSIONS</b>                   | <b>09 Lifting Height</b>         | Under Spreader - First Row                | H3              | mm.     | 15200                         | 16260                | 14670                   |
|                                     | <b>10 Width of Spreader</b>      | 20 Ft.                                    |                 | mm.     | 6052                          | 6052                 | 6052                    |
|                                     |                                  | 40 Ft.                                    |                 | mm.     | 12148                         | 12148                | 12148                   |
|                                     | <b>11 Side Tilting</b>           | Mechanical                                |                 | Deg.    | ± 3 mechanical                | ± 3 mechanical       | ± 4 hydraulic           |
|                                     | <b>12 Rotation</b>               | Hydraulic                                 |                 | Deg.    | -95+185                       | -95+185              | -95 + 185               |
|                                     | <b>13 Side shifter</b>           | Max                                       |                 | mm.     | ± 800                         | ± 800                | ± 800                   |
|                                     | <b>14 Boom Angle</b>             | Min / Max                                 |                 | Deg.    | 0/59                          | 0/59                 | 0 / 59                  |
|                                     | <b>15 Overall dimensions</b>     | Length without boom                       |                 | mm.     | 8560                          | 8560                 | 8560                    |
|                                     |                                  | Length with spreader                      | L               | mm      | 11630                         | 12000                | 11645                   |
|                                     | <b>16</b>                        | Width                                     | B               | mm.     | 4184                          | 4184                 | 4184                    |
|                                     | <b>17</b>                        | Boom height, Min.                         | H1              | mm.     | 4910                          | 4910                 | 4910                    |
|                                     | <b>18</b>                        | Boom height, Max                          | H4              | mm.     | 18140                         | 19200                | 18140                   |
|                                     | <b>19</b>                        | Height - Top of Cab                       | H5              | mm.     | 3884                          | 3884                 | 3884                    |
| <b>20</b>                           | Seat height                      | H                                         | mm.             | 2780    | 2780                          | 2780                 |                         |
| <b>20/A</b>                         | Min. dist. spreader from ground  | H2                                        | mm.             | 1608    | 1608                          | 1081                 |                         |
| <b>PERFORMANCE</b>                  | <b>21 Turning radius</b>         | Inner/Outer                               | R2/R1           | mm.     | 980 / 8390                    | 980 / 8390           | 980 / 8390              |
|                                     | <b>22 Aisle for 90° stacking</b> | Incl. 200 mm. safety margin 20' 40'       |                 | mm.     | 9810 / 12710                  | 9810 / 12710         | 9810 / 12710            |
|                                     | <b>Stability (static)</b>        |                                           |                 |         | EN 1459                       | EN 1459              | EN 1459                 |
|                                     | <b>23 Speeds</b>                 | Travelling F. & R. Laden/Unladen          |                 | km/h    | 21 / 24,5                     | 21 / 24,5            | 21 / 24,5               |
|                                     | <b>24</b>                        | Lifting : max / zero load (with booster*) | m/s             | M/s     | 0,29 / 0,32 (0,42)            | 0,29 / 0,32 (0,42)   | 0,29 / 0,32 (0,42)      |
|                                     | <b>25</b>                        | Lowering Laden/Unladen                    |                 | M/s     | 0,40 / 0,70                   | 0,40 / 0,70          | 0,40 / 0,70             |
|                                     | <b>26 Drawbar pull</b>           | Max - Laden                               |                 | kN      | 299,81                        | 299,81               | 299,81                  |
|                                     | <b>27 Gradeability</b>           | Max at 0 km /h - Laden                    |                 | %       | 21,7                          | 21,7                 | 21,7                    |
| <b>WEIGHTS</b>                      | <b>28 Gross vehicle weight</b>   |                                           |                 | Kg.     | 78200                         | 78800                | 84300                   |
|                                     | <b>29 Axle load - Front</b>      | Unladen                                   |                 | Kg.     | 35700                         | 35900                | 44300                   |
|                                     |                                  | Laden                                     |                 | Kg.     | 99400                         | 99700                | 108000                  |
|                                     | <b>30 Axle load - Rear</b>       | Unladen                                   |                 | Kg.     | 42500                         | 42900                | 40000                   |
| Laden                               |                                  |                                           | Kg.             | 23800   | 24100                         | 21300                |                         |
| <b>TYRES<br/>BRAKES<br/>CHASSIS</b> | <b>31 Tyres</b>                  | Number - Front/rear                       |                 |         | 4/2                           | 4/2                  | 4/2                     |
|                                     | <b>32</b>                        | Size - Front                              |                 | ins.    | 18.00-33 (36pr)               | 18.00-33 (36pr)      | 18.00-33 (36 pr)        |
|                                     | <b>33</b>                        | Size - Rear                               |                 | ins.    | 18.00-33 (36pr)               | 18.00-33 (36pr)      | 18.00-33 (36 pr)        |
|                                     | <b>34 Wheelbase</b>              |                                           | L3              | mm.     | 6500                          | 6500                 | 6500                    |
|                                     | <b>35 Track Front</b>            | Between centres - driven wheels           |                 | mm.     | 3033                          | 3033                 | 3033                    |
|                                     | <b>36 Track Rear</b>             | Between centres - steering wheels         |                 | mm.     | 2820                          | 2820                 | 2820                    |
|                                     | <b>37 Ground clearance</b>       | Mid-way along the wheelbase               |                 | mm.     | 350                           | 350                  | 350                     |
|                                     | <b>38 Foot brake system</b>      | Type/brake wheels                         |                 |         | Wet disc brake / Driven Wheel |                      |                         |
|                                     | <b>39 Parking brake</b>          | Type/brake wheels                         |                 |         | Spring brakes / Driven wheel  |                      |                         |
| <b>STEERING SYSTEM</b>              | <b>Type</b>                      |                                           |                 |         | Hydrostatic                   |                      |                         |
| <b>DRIVING SYSTEM</b>               | <b>40 Engine</b>                 | Manufacturer - Type                       |                 |         | CUMMINS QSL 9 **              |                      |                         |
|                                     | <b>41</b>                        | Rating - DIN 6271                         |                 | kW/(hp) | 246 (330)                     | 246 (330)            | 246 (330)               |
|                                     | <b>42</b>                        | Rated Speed                               |                 | RPM     | 2100                          | 2100                 | 2100                    |
|                                     | <b>43</b>                        | Peak Torque - at engine speed             |                 | Nm/RPM  | 1533 / 1400                   | 1533 / 1400          | 1533 / 1400             |
|                                     | <b>44</b>                        | Number Cylinders - swept volume           |                 | cm3     | 6 / 8900                      | 6 / 8900             | 6 / 8900                |
|                                     | <b>45</b>                        | Compression Ratio                         |                 |         | 17.8:1                        | 17.8:1               | 17.8:1                  |
|                                     | <b>46</b>                        | Fuel Consumption (Average)                |                 | l/h     | 12 - 15                       | 12 - 15              | 12 - 15                 |
|                                     | <b>47 Alternator</b>             | Type - Rating                             |                 | A       | 100 A                         | 100 A                | 100 A                   |
|                                     | <b>48 Starting Batteries</b>     | Voltage - Capacity                        |                 | V/Ah    | 2x12 V -200 Ah                | 2x12 V -200 Ah       | 2x12 V -200 Ah          |
|                                     | <b>49 Drive Axle</b>             | Type                                      |                 |         | With double reduction         |                      |                         |
|                                     | <b>50 Gear Box</b>               | Type-number of gears forward/rev.         |                 |         | Clark - 4/4                   | Clark - 4/4          | Clark - 4/4             |
|                                     | <b>51 Clutch</b>                 | Clutch type                               |                 |         | Torque converter              |                      |                         |
|                                     |                                  | <b>52 Hydraulic pressure</b>              | For attachments |         | Bar                           | 140                  | 140                     |
| <b>53 Sound Level</b>               |                                  | Inside Cabine - According to              |                 |         | EN 12053                      | EN 12053             | EN 12053                |

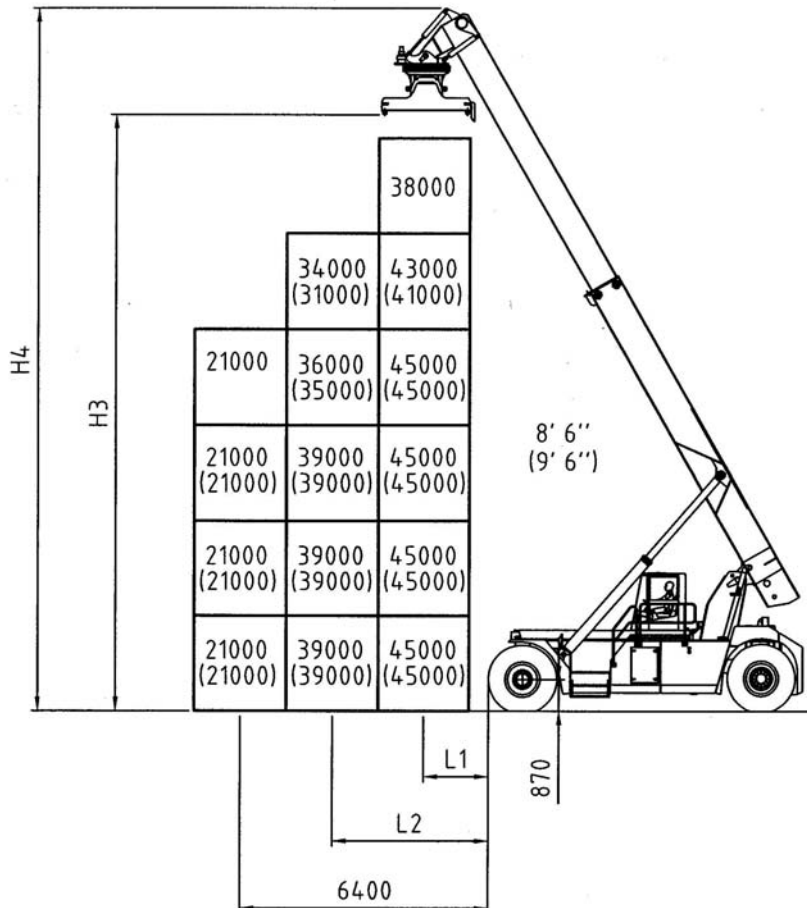
\* Booster option

\*\* Optional engines: SCANIA DC1258 (257 kW) and CUMMINS QSM11 (250 kW)

# Ferrari 479.5



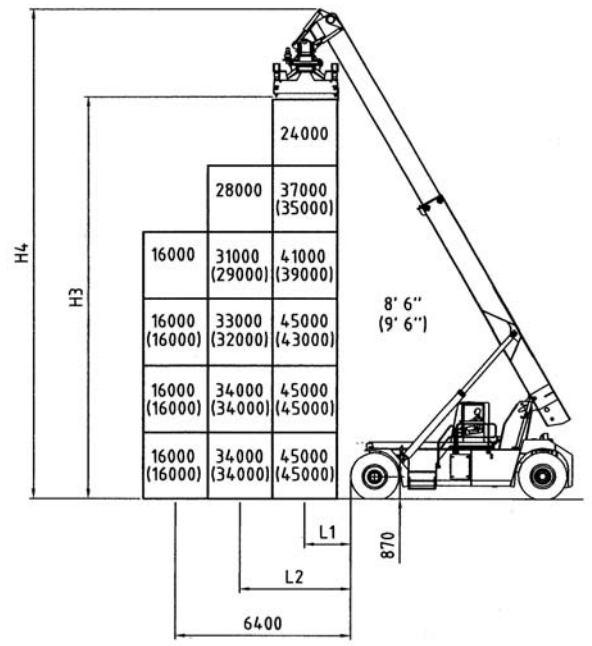
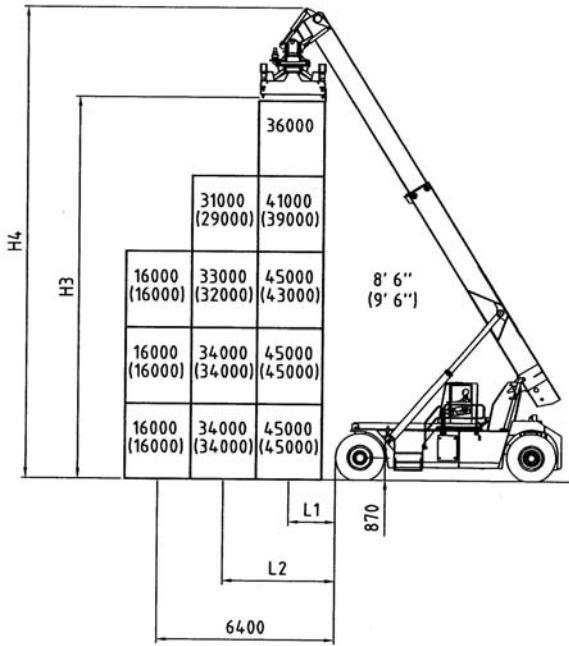
# Ferrari 479.6



# Ferrari 479.5PB

-

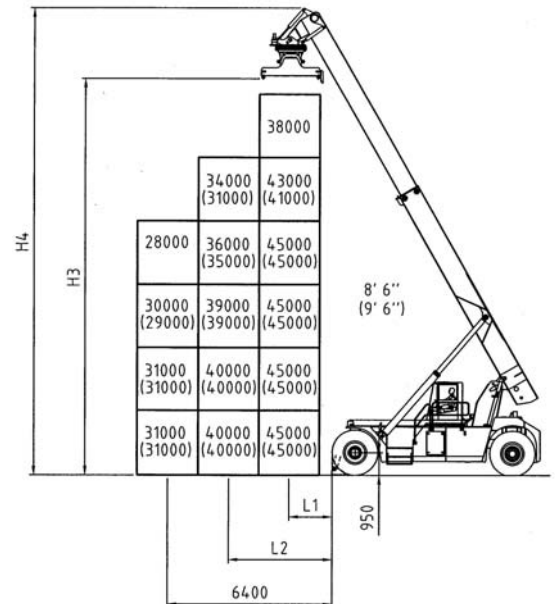
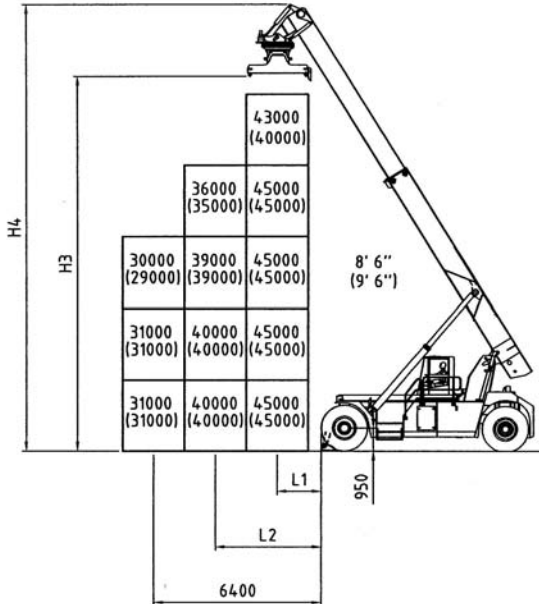
# Ferrari 479.6PB



# Ferrari 479.5 S

-

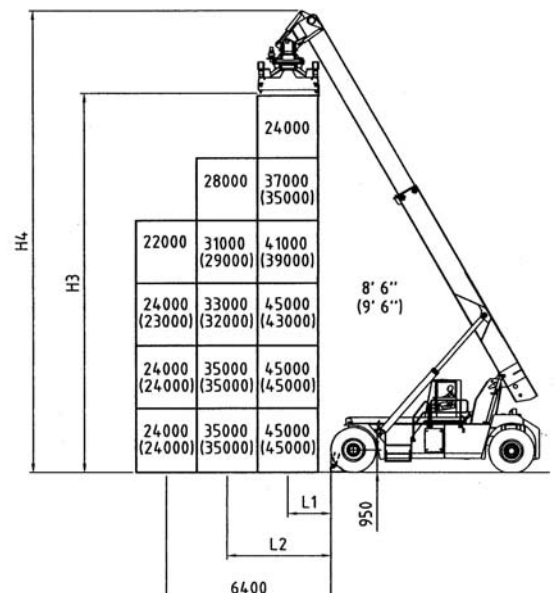
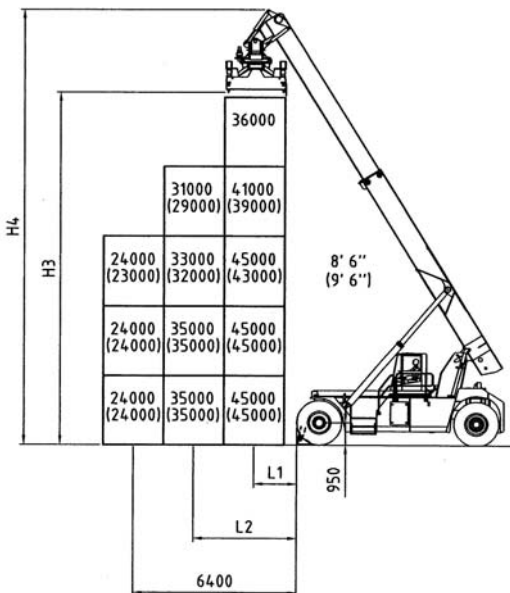
# Ferrari 479.6 S

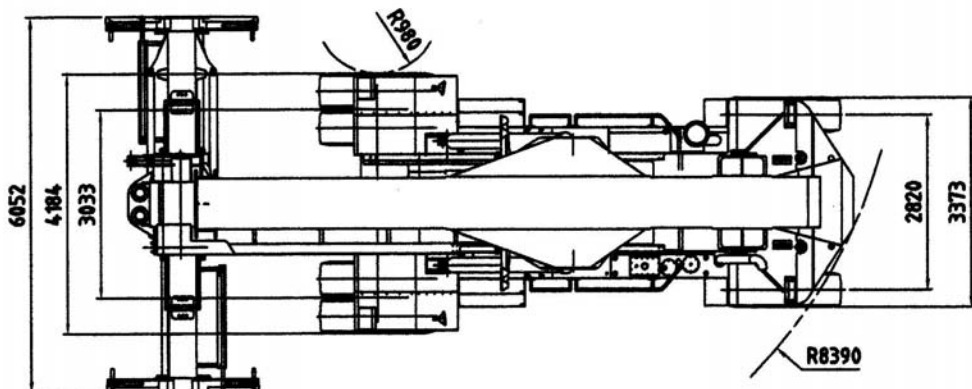
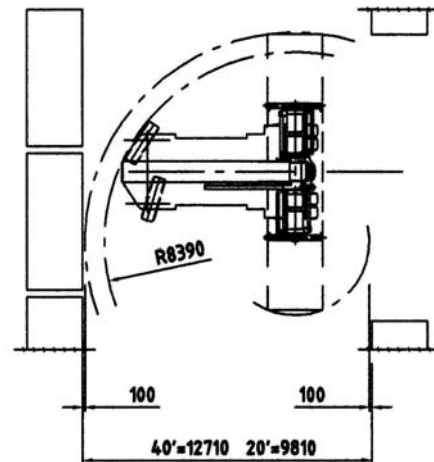
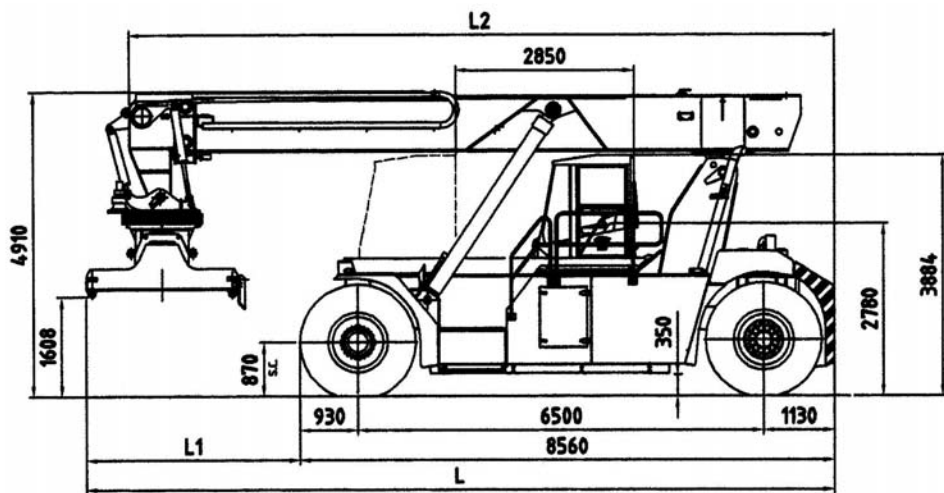


# Ferrari 479.5PBS

-

# Ferrari 479.6 PBS





**CHASSIS**

All welded box type. Torsion resistant structure. Low center of gravity.

**ENGINE**

CUMMINS QSL 9.  
Euromot step 3. Best performances and lowest fuel consumption. Low polluting level.

**TRANSMISSION**

CLARK TE 27400 - Integrated torque converter and power shift - 4 Speeds forward and 4 speeds reverse.

**FRONT AXLE**

Extra wide front axle for maximum stability. Hub reduction. Wet disc brake. Oil cooling. Extra heavy duty type.

**REAR AXLE**

Articulating axle with double acting single cylinder. Rubber shock absorbers. Full hydrostatic steering system (Orbitrol) with priority valve.

**HYDRAULIC SYSTEM**

Variable displacement pumps. Load sensing proportional distributor controlling telescoping and lifting. Anti-saturation LUDV system. Electrical multifunctional joystick with capacitive type dead man device. Oil cooling system.

**ELECTRICAL SYSTEM**

Modular system with diagnostic capability. Reliable and easy to service. 24V. - Two 12V. batteries of low maintenance type. Electric/electronic control of the machine based on CAN BUS technology.

**BOOM**

High torsion - High quality steel. One basic outer section and one inner telescopic section.

**SPREADER:**

Highest strength steel. Compact and precise. Telescoping from 20' to 40'. All functions controlled from cab. Side mechanical tilting. Damping cylinders. Safety sensors on four corners.

The illustrations and data contained in this brochure are not binding. The manufacturer reserves the right to make changes for any reason while not altering the primary specifications



**FERRARI**



Distributed & Serviced by:

C.V.S S.p.A. - Via Emilia - 29010 Roveleto di Cadeo (PC) ITALY  
Tel. ++39.0523.503511 - Fax ++39.0523.500439  
E-mail: info.mktg@cvsferrari.com