

tractors  
fork lift trucks  
empty container handling  
reach stackers ►  
straddle carriers  
steel coil handling  
pick & carry crane

products



C.V.S. spa

via Emilia, 20/22  
29010 Roveleto di Cadeo  
Piacenza - Italy

tel.+39.0523.503511  
fax+39.0523.500439

[www.cvsferrari.com](http://www.cvsferrari.com)  
[info.mktg@cvsferrari.com](mailto:info.mktg@cvsferrari.com)



## Technical Information

# Reach Stackers

**FERRARI**  
**F 279**

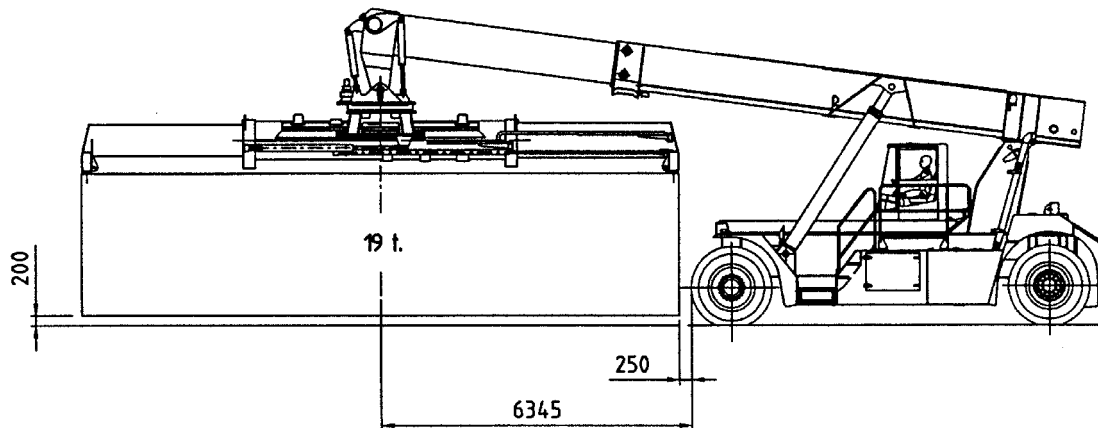
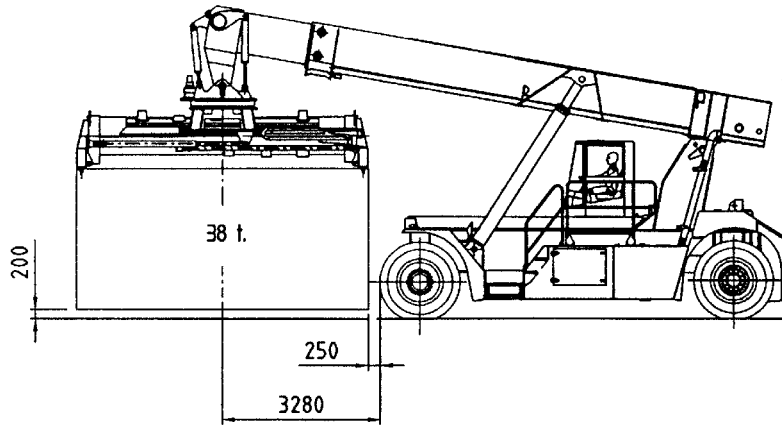
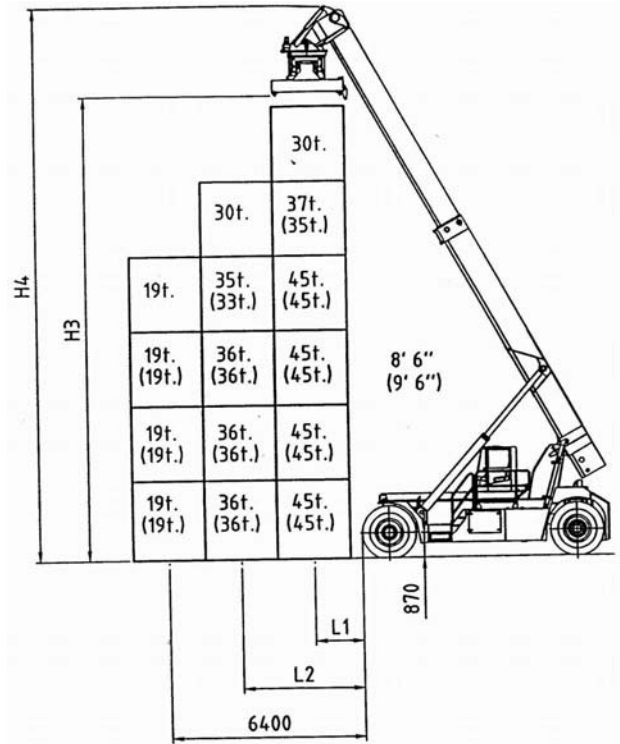
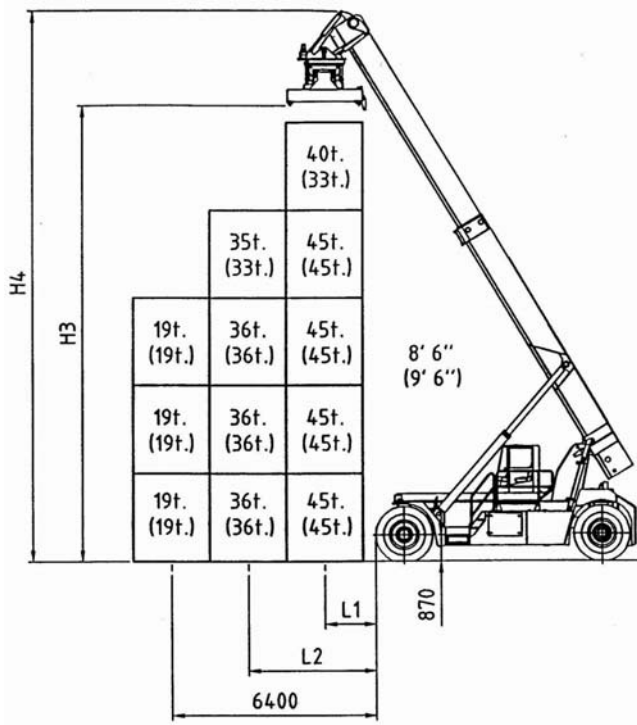
<b>SPECIFICATION</b>	<b>01 Manufacturer</b>				CVS	CVS	CVS
	<b>02 Model</b>				<b>FERRARI 279.5</b>	<b>FERRARI 279.6</b>	<b>FERRARI 279.5 PB</b>
	<b>03 Lifting capacity</b>	First Row/Second Row		Kg.	45000/36000	45000/36000	45000/31000
	<b>03 Lifting capacity</b>	under spreader + Piggy Back		Kg.	45000	45000	45000
	<b>04 Load Center</b>	First Row/Second Row	L1/L2	mm.	1670/3850	1670/3850	1670/3850
	<b>05 Power unit</b>				Diesel engine	Diesel engine	Diesel engine
	<b>06 Steering</b>				Steering wheel in the cab		
	<b>07 Tyre type</b>	Front / Rear			Pneumatic	Pneumatic	Pneumatic
<b>08 Wheels</b>	Number at Front/Rear (*=driven)			4*/2	4*/2	4* / 2	
<b>DIMENSIONS</b>	<b>09 Lifting Height</b>	Under Spreader - First Row	H3	mm.	15035	16095	14680
	<b>10 Width of Spreader</b>	20 Ft.		mm.	6052	6052	6052
		40 Ft.		mm.	12184	12184	12184
	<b>11 Side Tilting</b>	Mechanical		Deg.	±3	±3	± 3
	<b>12 Rotation</b>	Hydraulic		Deg.	-95+185	-95+185	-95 + 185
	<b>13 Side shifter</b>	Max		mm.	±800	±800	± 800
	<b>14 Boom Angle</b>	Min / Max		Deg.	0/59	0/60	0 / 59
	<b>15 Overall dimensions</b>	Length without boom		mm.	8560	8560	8560
		Length with spreader	L	mm	11645	12015	11645
	<b>16</b>	Width	B	mm.	4184	4184	4184
	<b>17</b>	Boom height, Min.	H1	mm.	4830	4830	4830
	<b>18</b>	Boom height, Max	H4	mm.	18140	19190	18140
	<b>19</b>	Height - Top of Cab	H5	mm.	3850	3850	3850
	<b>20</b>	Seat height	H	mm.	2760	2760	2760
	<b>20/A</b>	Min. dist. spreader from ground	H2	mm.	1405	1405	1050
<b>PERFORMANCE</b>	<b>21 Turning radius</b>	Inner/Outer	R2/R1	mm.	980 / 8390	980 / 8390	980 / 8390
	<b>22 Aisle for 90° stacking</b>	Incl. 200 mm. safety margin 20' 40'		mm.	9810 / 12710	9810 / 12710	9810 / 12710
	<b>Stability (static)</b>				EN 1459	EN 1459	EN 1459
	<b>23 Speeds</b>	Travelling F. & R. Laden/Unladen		km/h	24 / 25	24 / 25	24 / 25
	<b>24</b>	Lifting : max / zero load (with booster*)	m/s	M/s	0.23 / 0.26 (0.38)	0.23 / 0.26 (0.38)	0.23 / 0.26 (0.38)
	<b>25</b>	Lowering Laden/Unladen		M/s	0.29	0.29	0.29
	<b>26 Drawbar pull</b>	Max - Laden		kN	273	273	273
	<b>27 Gradeability</b>	Max at 0 km /h - Laden		%	22	22	22
<b>WEIGHTS</b>	<b>28 Gross vehicle weight</b>			Kg.	77700	79200	82400
	<b>29 Axle load - Front</b>	Unladen		Kg.	37450	39200	44000
		Laden		Kg.	100600	101800	108400
	<b>30 Axle load - Rear</b>	Unladen		Kg.	40250	40000	38400
Laden			Kg.	22100	22400	19000	
<b>TYRES BRAKES CHASSIS</b>	<b>31 Tyres</b>	Number - Front/rear			4/2	4/2	4/2
	<b>32</b>	Size - Front		ins.	18.00-33 (36pr)	18.00-33 (36pr)	18.00-33 (36 pr)
	<b>33</b>	Size - Rear		ins.	18.00-33 (36pr)	18.00-33 (36pr)	18.00-33 (36 pr)
	<b>34 Wheelbase</b>		L3	mm.	6500	6500	6500
	<b>35 Track Front</b>	Between centres - driven wheels		mm.	3033	3033	3033
	<b>36 Track Rear</b>	Between centres - steering wheels		mm.	2820	2820	2820
	<b>37 Ground clearance</b>	Mid-way along the wheelbase		mm.	450	450	450
	<b>38 Foot brake system</b>	Type/brake wheels			Wet disc brake / Driven Wheel		
	<b>39 Parking brake</b>	Type/brake wheels			Spring brakes / Driven wheel		
<b>STEERING SYSTEM</b>	<b>Type</b>				Hydrostatic		
<b>DRIVING SYSTEM</b>	<b>40 Engine</b>	Manufacturer - Type			SCANIA DI 12 **		
	<b>41</b>	Rating - DIN 6271		kW/(hp)	243 (330)	243 (330)	243 (330)
	<b>42</b>	Rated Speed		RPM	2100	2100	2100
	<b>43</b>	Peak Torque - at engine speed		Nm/RPM	1589 / 1400	1589 / 1400	1589 / 1400
	<b>44</b>	Number Cylinders - swept volume		cm3	6 / 11700	6 / 11700	6 / 11700
	<b>45</b>	Compression Ratio			18:1	18:1	18:1
	<b>46</b>	Fuel Consumption (Average)		l/h	12 - 15	12 - 15	12 - 15
	<b>47 Alternator</b>	Type - Rating		A	130 A (2 X 65 A)	130 A (2 X 65 A)	130 A (2 X 65 A)
	<b>48 Starting Batteries</b>	Voltage - Capacity		V/Ah	2x12 V -200 Ah	2x12 V -200 Ah	2x12 V -200 Ah
	<b>49 Drive Axle</b>	Type			With double reduction		
	<b>50 Gear Box</b>	Type-number of gears forwar/rev.			Clark - 4/4	Clark - 4/4	Clark - 4/4
	<b>51 Clutch</b>	Clutch type			Torque converter		
		<b>52 Hydraulic pressure</b>	For attachments		Bar	140	140
<b>53 Sound Level</b>		Inside Cabine			EN 12053	EN 12053	EN 12053

\* Booster option

\*\* engine option: CUMMINS QSM11

# Ferrari 279.5

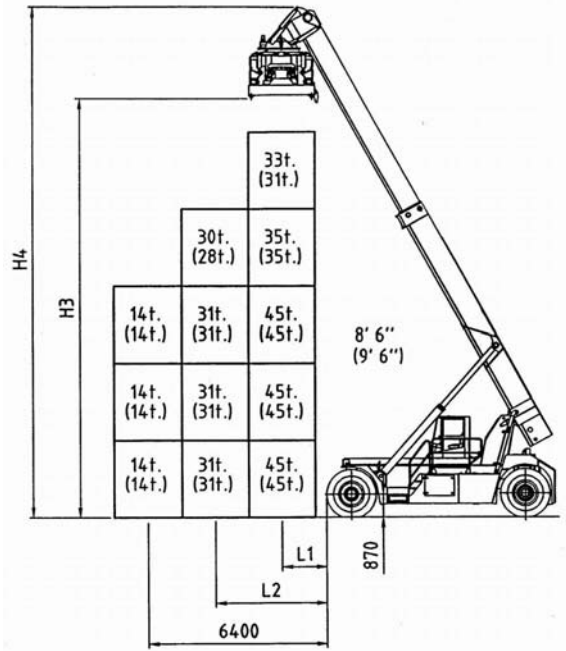
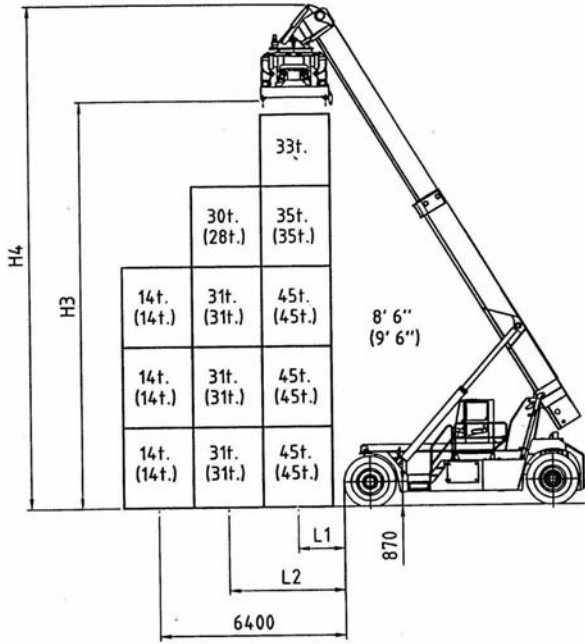
# Ferrari 279.6



# Ferrari 279.5PB

-

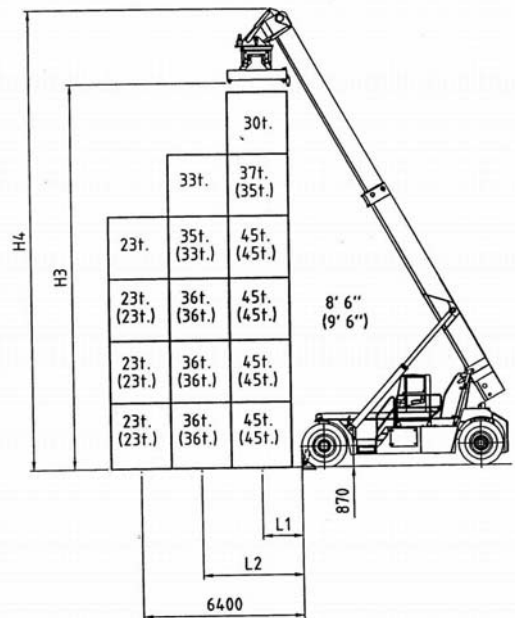
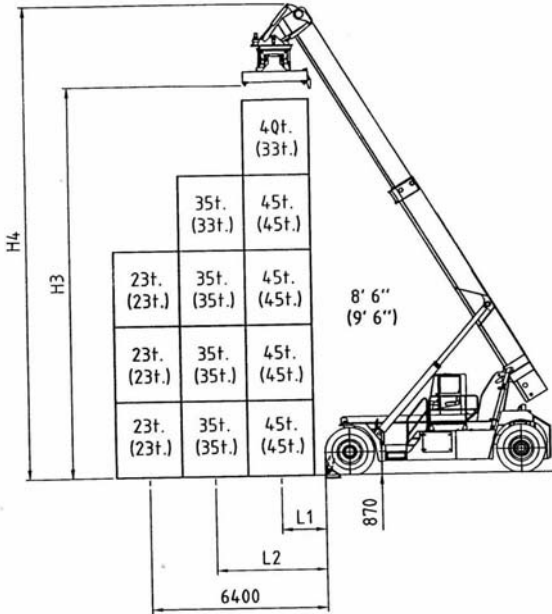
# Ferrari 279.6PB



# Ferrari 279.5 S

-

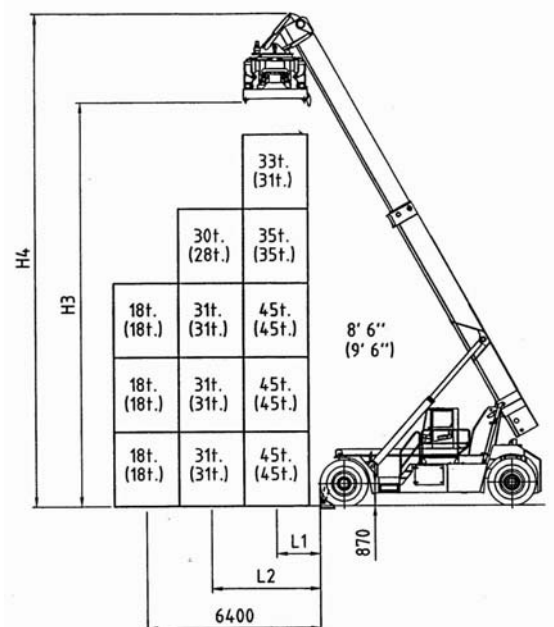
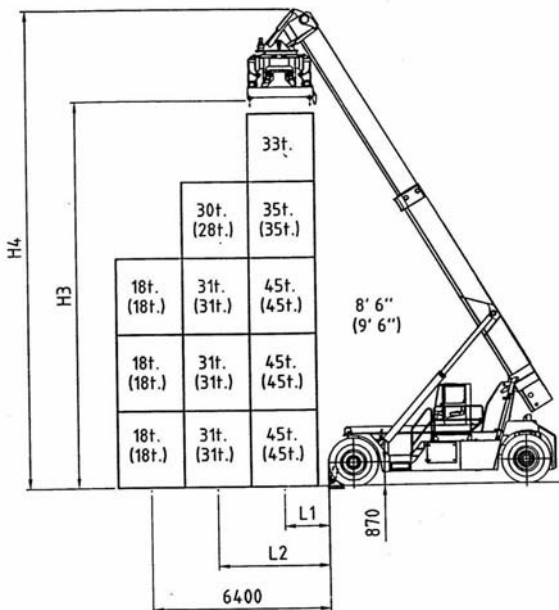
# Ferrari 279.6 S

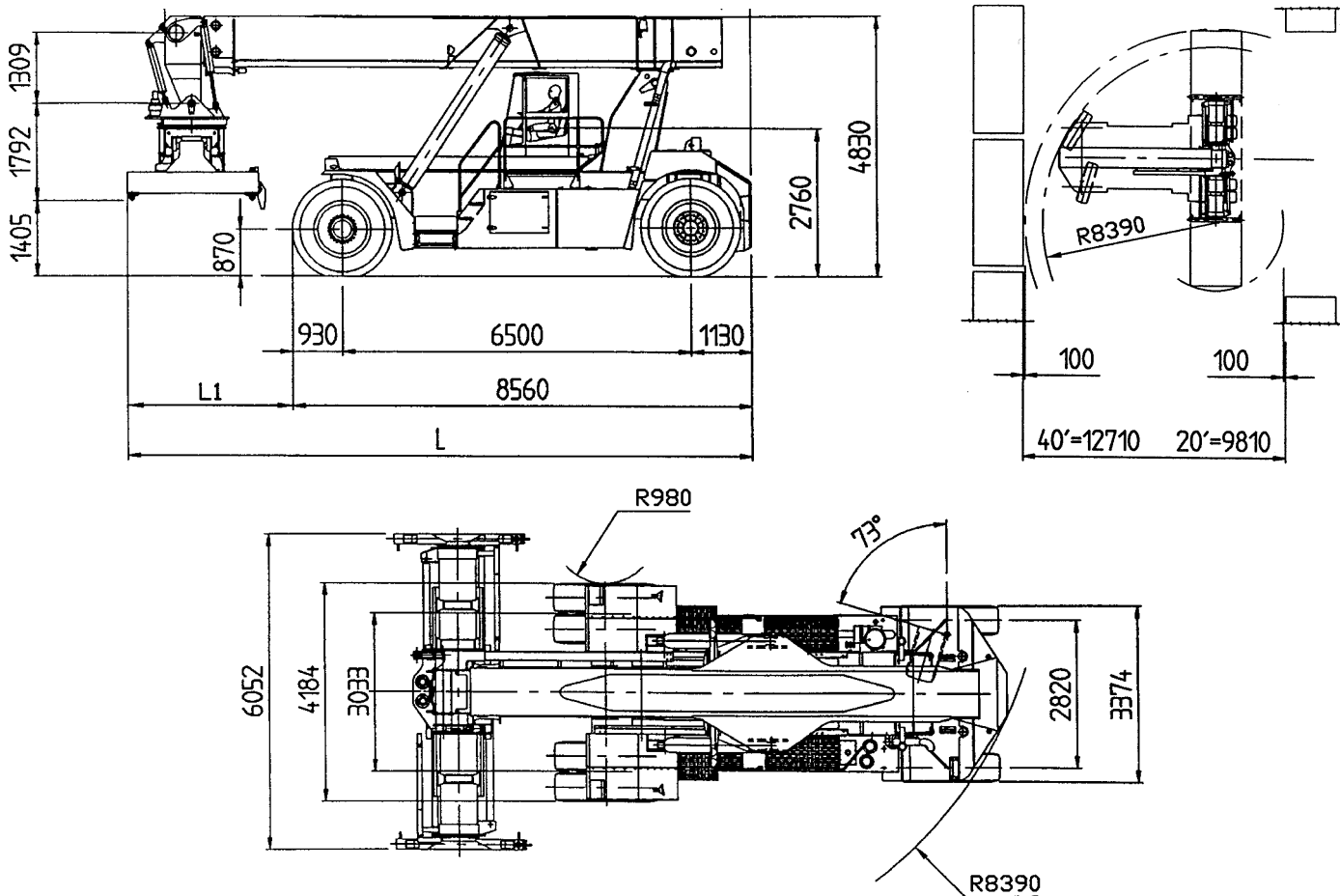


# Ferrari 279.5PBS

-

# Ferrari 279.6 PBS





**CHASSIS**

All welded box type. Torsion resistant structure. Low center of gravity.

**ENGINE**

SCANIA DI 12.  
Euromot step 2. Best performances and lowest fuel consumption. Low polluting level.

**TRANSMISSION**

CLARK 36000 - Integrated torque converter and power shift - 4 Speeds forward and 4 speeds reverse.

**FRONT AXLE**

Extra wide front axle for maximum stability. Hub reduction. Wet disc brake. Oil cooling. Extra heavy duty type.

**REAR AXLE**

Articulating axle with double acting single cylinder. Rubber shock absorbers. Full hydrostatic steering system (Orbitrol) with priority valve.

**HYDRAULIC SYSTEM**

Variable displacement pumps. Load sensing proportional distributor controlling telescoping and lifting. Anti-saturation LUDV system. Multifunctional joystick. Oil cooling system.

**ELECTRICAL SYSTEM**

Modular system with diagnostic capability. Reliable and easy to service. 24V. - Two 12V. batteries of low maintenance type. Electric/electronic control of the machine based on CAN BUS technology.

**BOOM**

High torsion - High quality steel. One basic outer section and one inner telescopic section.

**SPREADER:**

Highest strength steel. Compact and precise. Telescoping from 20' to 40'. All functions controlled from cab. Side mechanical tilting. Damping cylinder. Safety sensors on four corners.

The illustrations and data contained in this brochure are not binding. The manufacturer reserves the right to make changes for any reason while not altering the primary specifications



Distributed & Serviced by:

C.V.S S.p.A. - Via Emilia - 29010 Roveleto di Cadeo (PC) ITALY  
Tel. ++39.0523.503511 - Fax ++39.0523.500439  
E-mail: info.mktg@cvsferrari.com