

Hinrichs Flurfördergeräte · Fuldastraße 32 · 26135 Oldenburg

Fuldastraße 32 · 26135 Oldenburg, Germany

Telefon +49 (0)441 950 64 110 info@hinrichs-stapler.de

Telefax +49 (0)441 950 64 119 www.hinrichs-stapler.de



Quotation For

Hinrichs Flurfördergeräte · Fuldastraße 32 · 26135 Oldenburg

Fuldastraße 32 · 26135 Oldenburg, Germany

Telefon +49 (0)441 950 64 110 info@hinrichs-stapler.de

Telefax +49 (0)441 950 64 119 www.hinrichs-stapler.de

With reference to your email inquiry and our telephone conversation, we have the pleasure of offering you the following equipment according to your specifications.

Quoted Summary

Kalmar, Type DRG450-65S5	1	Pcs.
--------------------------	---	------

Terms & Conditions

Availability / Delivery lead time	Stock Unit – Estimated Availability week 43 Stock units will be offered on first come first served principle
Delivery Term	DPU - Delivered at Place Hamburg
Payment terms for Equipment	30% advance, rest before delivery
Taxes & Duties	This quote does not include tax.
Warranty	Standard warranty does not include damage and abuse, fair wear and tear, consumables, oils, tyres, batteries, filters, etc. Otherwise, in accordance with Kalmar Standard Warranty terms. If additional warranty is purchased, please refer to Kalmar Warranty terms.
Applicable General Terms & Conditions	Kalmar Terms And Conditions
Valid Until	10/21/2024

We trust you will find the quotation of interest and look forward to hearing from you. For further information, do not hesitate to contact us.

Kind regards

Marco Levermann

Container Handling DRG450-65S5

Category	Product Name	Quantity
	Outbound Freight - Included in Machine Price	1
	Assembly Labor	1
Base machine	Kalmar Reachstacker DRG450-65S5	1
Cab	Kalmar EGO cabin	1
Cab	Hydraulic movable cab	1
Cab	Grammer Actimo XL air cushioned 3 point safety belt + heating	1
Cab	Head rest for driver`s seat	1
Cab	Extra seat including safety belt	1
Cab	Kalmar Ego joystick	1
Cab	Retractable sun visor - front windshield, black perforated material	1
Cab	Retractable sun visor - roof window, black perforated material	1
Cab	In cabin FM radio	1
Cab	Holder for terminal and monitor	1
Cab	Writing desk including reading light and box for paper	1
Cab	Power outlets: 1 x 12V socket and 1 x USB socket plus 2 x 5v and 2 x 24v outlets	1
Drive train	Volvo TAD1181VE - 355 hp (265 kW) + Dana TE30 - Tier 4F	1
Drive train	Automatic stop of engine andignition at idling	1
Electrical	Extra working light, LED 4 pcs on fenders	1
Electrical	Extra working lights fitted on middle of boom	1
Electrical	Speed limitation outside transport mode	1
Wheel	Continental diagonal tires V-PLY 18.00x25 - 6pcs	1
Color	Standard color - Kalmar	1
Extra equipment	Kalmar Insight Hardware Preparation	1
Extra equipment	Kalmar Insight license for 1 year	1
Documentation	Operators Manual Swedish	1
Documentation	Maintenance Manual Swedish	1

Documentation	Spare Parts Catalogue Swedish	1
Extra equipment	Quad	1
Electrical	Electric heated and adjustable mirrors on front light bracket	1
Extra equipment	Central greasing system - Base machine 8kg grease reservoir	1
Extra equipment	Central greasing system - Attachment	1
Extra equipment	Engine/hydraulic oil heater including cab heater + interlock	1
Extra equipment	Anti-slip protection mudguards and tanks	1
Extra equipment	Nato starter socket 24V	1
Extra equipment	Tire air pressure control	1
Attachment	Lifting holes/eyes in spreader 2pcs	1
Attachment	Automatic extension 20-40' including 30' stop	1
Warranty	Standard Warranty (2 year or 4000 hours)	1
Documentation	Digital version of Spare Parts Catalog (available for download by Kalmar Dealer).	1
Documentation	Digital version of Maintenance Manual (available for download by the Kalmar Dealer).	1

Base machine

Kalmar Reachstacker DRG450-65S5

To stack 8'6 and 9'6 containers 5-high
Wheelbase = 256 (6500mm)

Capacity

First Row:

8'6/9'6 containers:

99,200 lbs (45t) capacity - stacking 1/2/3/4/5-high

Second Row:

8'6 containers:

70,500 lbs (32t) capacity - stacking 1/2/3/4/5-high

9'6 containers:

70,500 lbs (32t) capacity - stacking 1/2/3/4-high

Third Row:

8'6 containers:

35,200 lbs (16t) capacity - stacking 1/2/3/4-high

9'6 containers:

35,200 lbs (16t) capacity - stacking 1/2/3-high

Rail:

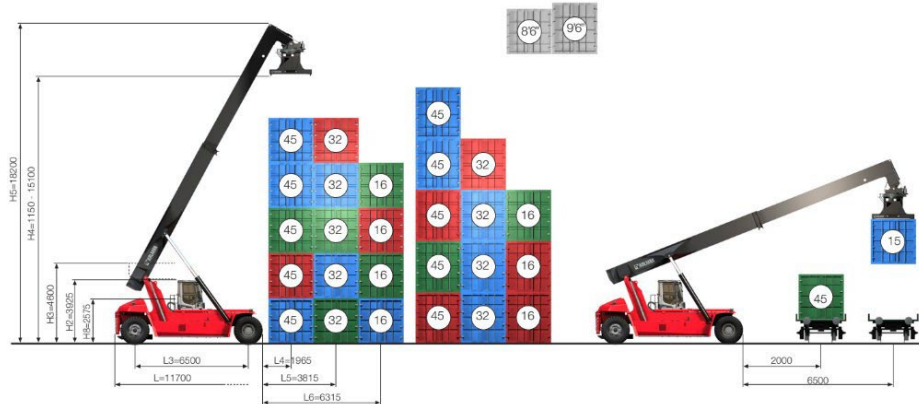
33,000 lbs (15t) capacity to center of 2nd rail - 256 (6500mm)

Fuldastraße 32 • 26135 Oldenburg, Germany

Telefon +49 (0)441 950 64 110 info@hinrichs-stapler.de

Telefax +49 (0)441 950 64 119 www.hinrichs-stapler.de

Hinrichs Flurfördergeräte • Fuldastraße 32 • 26135 Oldenburg



Boom

Telescopic, duplex boom with a single extension cylinder and two lift cylinders

Maximum lift height under twist-locks 594" (15100mm)

Boom height, fully extended 717" (18200mm)

Boom height, lowered 181" (4600mm)

Attachment

Spreader for lifting containers Top lift 20'-40' with maximum capacity of 99,200 lbs (45t)

Sideshift ± 31.5 (800mm)

Mechanical leveling $\pm 5^\circ$

Rotation $+195^\circ/-105^\circ$

Floating ISO Twist-locks

Hooks at each corner for slings rated at 27,500 lbs each (12.5t) for 99,000 lbs (45t) total

- weight should be evenly distributed between hooks

Chassis

Safe angled entrance

Lifting eyes front/rear

Towing pin

Rear view mirrors on each side

Drivetrain

Automatic gear shifting

Two stage filter with integrated pre-cleaner and service indicator

Cab	Kalmar EGO cabin
-----	------------------

Kalmar Ego Cabin, complete with all instrumentation.
All switches in the cab are equipped with LED lights.
Head-up display in LED for twist lock indication.
2 X 24V outlet in the door columns.
Manual moveable cabin for service & inspection.
Standard seat, mechanical spring, 2-point safety belt and high backrest.
Electrically adjustable armrest right hand side.
Tinted/Laminated windows including sliding windows in the left and right door.
Complete doors with handle, key lock and air damper (left & right side).
Wipers front (double), rear and roof window.
Complete maneuverable system right hand console including standard display (electric adjustable), multi-function level left side.
Adjustable control, steering wheel console and switch panels.
Ergonomic joystick for boom and attachment functions.
Speed control pedal right side, brake pedals left and right side.
Steering wheel with steering wheel knob.
Safety override for hydraulic functions (by code).
ECH, electronic controlled heating/ventilation including Air Conditioning and fresh air inlet filter, switched off when door is open.
Color display DM430E and menu control with toggle wheel.

Cab	Hydraulic movable cab
-----	-----------------------

Hydraulic sliding cab including load center limitation for lifting boom
The cab movement is operated by a hydraulic motor and chain drive, stroke is 93.5 (2375 mm). The cab can be moved FW/BW when door is closed.
Includes rear view mirrors on front fenders.

Cab	Grammer Actimo XL air cushioned 3 point safety belt + heating
-----	---

The standard Kalmar mechanical seat with a 2-point seatbelt is replaced by an upgraded Grammer Actimo XL air cushioned version including a 3-point seatbelt with heating, headrest, active length dampening, individual settings.

Cab	Head rest for driver's seat
-----	-----------------------------

Cab	Extra seat including safety belt
------------	---

An extra seat is added to the left side of the cabin, next to the driver. Includes a 2-point safety belt. Required for operation with a passenger/instructor. Can be folded away when not in use for easier cabin access.

Cab	Kalmar Ego joystick
------------	----------------------------

Includes forward/reverse switch and horn button

Cab	Retractable sun visor - front windshield, black perforated material
------------	--

Extendable/retractable net visor is added for front windscreen sun protection.

Cab	Retractable sun visor - roof window, black perforated material
------------	---

Extendable/retractable net visor is added for roof windscreen sun protection.

Cab	In cabin FM radio
------------	--------------------------

Includes FM tuner, MP3/USB, AUX, Bluetooth, and Hands free-function

Cab	Holder for terminal and monitor
------------	--

Mounted to front right pillar.

Cab	Writing desk including reading light and box for paper
------------	---

Cab	Power outlets: 1 x 12V socket and 1 x USB socket plus 2 x 5v and 2 x 24v outlets
------------	---

24/12 V converter including four 20 Amp sockets located on front cab posts
- One 12 volt, One USB socket, Two 5v and Two 24 volt power outlets

Drive train Volvo TAD1181VE - 355 hp (265 kW) + Dana TE30510 - Tier 4F

Engine

Volvo TAD1181VE diesel engine
EPA Tier 4F / EU Stage V
355 hp (265 kW) @ 1450-2100 rpm
1316 lb-ft (1785Nm) @1400 rpm

Transmission

Dana TE30510 transmission
5 speed forward - 3 speed reverse
Torque converter with Lock-up

Drive train Automatic stop of engine and ignition at idling

Engine and ignition automatically stop after a set period of time (default delay is 10-minuties - delay time can be changed by a service technician).
Conditions for auto-stopping the engine:

- Machine has reached operating temperature.
- Battery charging status is OK.
- Machine stationary in neutral position at idling speed.
- Load handling functions inactive.
- Parking brake is activated.

Electrical Extra working light, LED 4 pcs on fenders

Four (4) additional LED working lights mounted on the front fenders.

Electrical Extra working lights fitted on middle of boom

Two (2) additional working lights LED, mounted on lifting boom.

Electrical Speed limitation outside transport mode

According to instruction manual.

Wheel	Continental diagonal tires V-PLY 18.00x25 - 6pcs
	Full set of six (6) diagonal V-PLY tires manufactured by Continental. Intended for distances of 2.8 miles/hour (4,500 meters/hour) or less (varies depending on ground conditions).
Color	Standard color - Kalmar
	Chassis - Kalmar Red RAL 3000
	Cab - Kalmar Grey RAL 7011
	Boom/spreader - Kalmar Black RAL 7021
	Decals/logos/stripes - Kalmar White RAL 7047
Extra equipment	Kalmar Insight Hardware Preparation
Extra equipment	Kalmar Insight license for 1 year
	Kalmar Insight - software license - Performance management tool for cargo handling operations providing equipment performance information. - Kalmar Insight is subject to Kalmar Insight Terms & Conditions, available at https://insight.mykalmar.com/terms-and-conditions .
Documentation	Operators Manual Swedish
Documentation	Maintenance Manual Swedish
Documentation	Spare Parts Catalogue Swedish

Extra equipment

Extend Combo - Reverse camera with 10 split view monitor

Option combination with Rearward mounted 130° Camera; 10 split view Monitor in cabin. Showing up to four camera views at a time. Rearward camera triggered by reverse.

Enables extension options; up to three additional option camera units shown in split view and/or Radar Kit (2x Radar sensors w connection box) and/or DVR unit. Also enables adding an additional 10 split view monitor as a parallel system, doubling the extension possibilities.

Monitor:

10" touch screen w split view, up to four camera views

4 camera inputs HD1080p

Resolution: 1024 x 3(GB) x 600

Integrated loudspeaker

Input for radar signals, overlay with coloured detection ranges

IP-class: IP67

Op. temp.: -4°F to 158°F (-20°C to +70°C), RH 90%

Dim: 10.5x6.3x1.1 (267x160x30 mm (WxHxT))

Camera:

View angle: 130°

Resolution 1080p (Full HD)

Effective pixels 1920x1080 (2,1 Mp)

Smart-IR night vision

Distance: ~5 m (6 infrared lights)

Min. Illumination: 0,1 Lux (day), 0 Lux (w IR)

IP-class: IP69K

Op. temp.: -40°F to 176°F (-40°C to +80°C)

Dim: 2.5x2.7x2.1 (65x70x55 mm) (WxHxD)

Anti-vibration: 5,9 G

Electrical

Electric heated and adjustable mirrors on front light bracket

Electric heated and adjustable rear view mirrors on front light bracket
1pcs/side.

Extra equipment

Central greasing system - Base machine 8kg grease reservoir

Chassis mounted central lubrication system with 8kg reservoir that automatically greases points on the base machine.

Extra equipment

Central greasing system - Attachment

Automatic central lubrication system for spreader/tool carrier/over height legs.

-Greasing points: container spreader (16), tool carrier (20), or over height legs (16)

-4.4 lb (2kg) reservoir

Extra equipment

Engine/hydraulic oil heater including cab heater + interlock

Auxiliary engine and hydraulic oil heater with interlock, 230 V or 400 V. When operating in very cold environments (expected temperatures below -15°C) the engine/hydraulic oil heater is recommended to facilitate motor start, reduce the load on the 24 V battery, and prevent hydraulic pump cavitation and damages to the hydraulic system.

Controls located in the cabin.

Extra equipment

Anti-slip protection mudguards and tanks

Anti-slip protection tape (black color) on fenders and tanks, for increased traction when stepping on the machine.

Extra equipment

Nato starter socket 24V

NATO 24V quick starter socket added on battery box.

Extra equipment

Tire air pressure control

Tire air pressure monitoring system in cabin display. Individual sensors on each tire.

Attachment

Lifting holes/eyes in spreader 2pcs

2 lifting holes in center of spreader.

Lift must be made in both lift hole at same time, 49,500 lbs. (22.5t) capacity per hole.

Attachment

Automatic extension 20'-40' including 30' stop

Cabin controls for automatic extension 20'-40', includes a stop at the 30' position.

Hinrichs Flurfördergeräte · Fuldastraße 32 · 26135 Oldenburg

Fuldastraße 32 · 26135 Oldenburg, Germany

Telefon +49 (0)441 950 64 110 info@hinrichs-stapler.de

Telefax +49 (0)441 950 64 119 www.hinrichs-stapler.de

Warranty	Standard Warranty (2 year or 4000 hours)
-----------------	---

See Warranty information statement for details.

Documentation	Digital version of Spare Parts Catalog (available for download by Kalmar Dealer).
----------------------	--

Documentation	Digital version of Maintenance Manual (available for download by the Kalmar Dealer).
----------------------	---

IMAGES

