

G_{LOBAL SALES NETWORK}

IC TOW TRACTOR 2.0/2.5/3.0t



CE CERTIFICATE



ISO14001: 2004



ISO9001: 2008

HANGCHA GROUP CO., LTD.
(Zhejiang Hangcha Imp. & Exp.Co.,Ltd.)

www.hcforklift.com

Add:398 Shi Qiao Road, Hangzhou Zhejiang province, China(310022)

Factory site:No.88,Donghuan Rd., Economic Development Zone Lin'an, Zhejiang, China(311305)

Tel: +86-571-88926755

Fax: +86-571-88926789 88132890

E-mail: sales@hcforklift.com

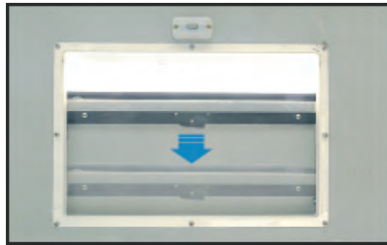
HANGCHA GROUP CO., LTD. Reserves the right to make any changes without notice concerning colors, equipment, or specifications detailed in this brochure, or to discontinue individual models. The colors of trucks, delivered may differ slightly from those in brochures.

2015 VERSION 1/COPYRIGHT 2015/05

HANGCHA GROUP CO., LTD.



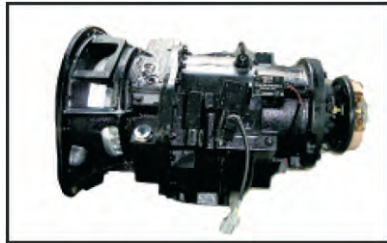
Front window can be open



Translation skylight is the standard configuration for cabin



CUMMINS engine(optional)



OKAMURA transmission(optional)



Three different types of pin meet all demand

Appearance

- Body choosing modern large circular arc streamline surface modeling, low chassis-body, and the cab layout, rich visual sense of tension and strong driving force, is in accordance with international design trend.
- The vehicle appearance is concise, reliable and luxurious.

Safety & Reliability

- The front and beam are made of thick steel plate and welding body, high strength.
- Low body and the cab use skylight, the height of the body remain unchanged, it can protect the roof from the scratch.
- X-type arrangement of dual piping, distribute the pressure by front and rear, the braking system is safe, stable and reliable. The design of vacuum drum ensure the braking system working as usual .
- The hydrodynamic drive system prevents the misoperation of shifting gear.
- The traction device with safe lock and self-locking function, prevent the traction pin from jumping up and wrong operation.
- The electrical switch can cut off the power.

Comfort

- Adopt the new digital dashboard and rocker switch, the status of vehicle can be clear at a glance, simple, reliable and intuitive.
- Adopt horizontal cylinder steering axle and full hydraulic steering gear, the steering force is less than 10N. Optional synchronous steering system provide good stability, especially suitable for long-distance road in the airport and so on.
- The advanced floating suspension system , long wheelbase design, ensure the comfort of the vehicle.

- Optimized design structure can offer a good visibility and easier operation .

Environmental protection

- Low speed high torque motor match well with high efficient transmission, and power is strong, the vehicle with high efficiency, excellent of the economy.
- Emissions are according to national standards, customer can choose dual fuel LPG system, the advanced LPG system is more environmentally friendly and economical.

- Vehicle use non-asbestos material.

Easy maintain

- Opening the cover, the engine, fuel tank, water tank, oil pump, steering gear, brake master cylinder are all exposed, the structure is conducive to the maintenance.
- The reasonable arrangement of electrical controller is easy for maintenance.

Standard Feature

- Emergency disconnect switch
- Head lamp
- Turning lamp
- Rear combined LED
- Water temperature gauge
- Transmission oil temperature warning(hydraulic transmission)
- Transmission oil pressure gauge(mechanical transmission)
- Neutral safety switch(hydraulic transmission)
- Fuel gauge
- Engine oil pressure warning
- Full hydraulic power steering
- Sun shield
- Louver
- Equipment of opening front window
- Front wiper
- Adjustable device for steering wheel

- Horn
- Buzzer
- Hour meter
- Rear view mirror
- Dome light
- Fan
- Large rubber pedal pad
- Hand grip
- Full closed cab
- Vacuum assistant braking system
- Standard seat
- Toolbox
- Traction pin
- Retroreflector

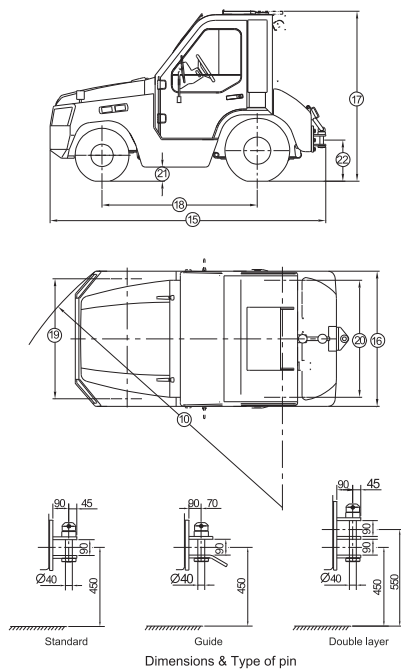
Options

- Warning lamp
- Rear working lamp
- Speed limit alarm
- Protective bracket of front lamp
- Different height of traction pin
- Semi-closed cab
- Windshield washer fluid
- Steam air heater
- Defroster
- Synchronous steering system
- Defrost device of front window
- Hydraulic assistant brake system
- Front and rear bumpers
- Front pothook
- Extinguisher
- High inlet
- Dual air filters
- Cap lock of fuel tank
- Solid tyre
- Coaming of the rear platform
- Wide base tyre
- Customer painting
- Little weight
- Air-condition

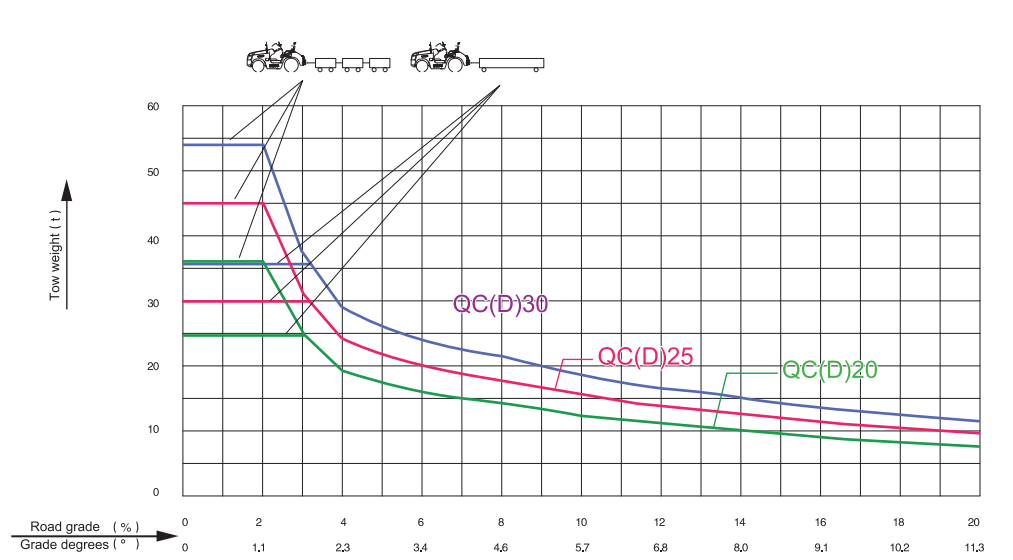
			Model	QCD20-JW10B-12	QCD20-JW22B-12	QCD25-JW22B-12	QCD20-JW22B-Y	QCD25-JW22B-Y	QCD20-JW33B-12	QCD25-JW33B-12	QCD30-JW33B-12	
Parameter			TYPE	Airport	Airport	Airport	Airport	Airport	Airport	Airport	Airport	
Performance	Maximum Drawbar Pull		N	20000	20000	25000	20000	25000	20000	25000	30000	
	Towing Weight	One towing pallet	kg	26000	26000	33000	26000	33000	26000	33000	36000	
		Two towing pallet	kg	39000	39000	49000	39000	49000	39000	49000	54000	
	Max. Traveling Speed	Forward	Shift 1	km/h	16.1	18		18		16		13
			Shift 2	km/h	30	32.5		32.5		29		25.5
		Backward	Shift 1	km/h	20.6	14		14		20		17.5
	Min. Turning Radius (outside)		mm	3250	3250		3250		3250			
Max. Gradeability (Shift1)		%	30	30		30		30				
Weight	Weight distribution	Front	kg	1070	970	895	970	895	1045	960	990	
		Rear	kg	2030	2200	2555	2220	2575	2205	2560	3020	
	weight		kg	3100	3170	3450	3190	3470	3250	3520	4010	
Dimensions	Overall Length		mm	3020	3020		3020		3020			
	Overall Width		mm	1480	1480		1480		1480			
	Overall Height		mm	1826	1826		1826		1826			
	Wheel Base		mm	1700	1700		1700		1700			
	Track	Front	mm	1315	1315		1315		1315			
		Rear	mm	1280	1280		1280		1280		1260	
	Min. Clearance to ground		mm	120	120		120		120			
Track rod center height		mm	450	450		450		450				
Transmission&Battery	Battery Voltage/Capcity(20HR)		V/AH	12/95	12/65		12/65		12/95			
	Transmission	Manufacture		OKAMURA	OKAMURA		OKAMURA		OKAMURA			
		Type		Hydraulic	Hydraulic		Hydraulic		Hydraulic			
		Gear Fwd/Rvs		2/1	2/1		2/1		2/1			
	Steering mode			Y43300X	Y43300X		Y43300X		Y43300X		Y43310X	
	Brake	Service braking		Vacuum power brake	Vacuum power brake		Vacuum power brake		Vacuum power brake			
		Park braking		Mechanical	Mechanical		Mechanical		Mechanical			
Tire	Front		6.50-10-10PR	6.50-10-10PR		6.50-10-10PR		6.50-10-10PR				
	Rear		7.00-12-12PR	7.00-12-12PR		7.00-12-12PR		7.00-12-12PR		28×9-15-12PR		
Engine	Model			C240-PKJ-30	K25		K25		4TNE98			
	Manufacture			ISUZU	NISSAN		NISSAN		YANMAR			
	Power type			Diesel	Gasoline		LPG		Diesel			
	Displacement		L	2.369	2.488		2.488		3.319			
	Rated capacity		KW/(r/min)	34.3/2500	37.4/2300		37.4/2300		42.1/2300			
	Rated Torque		N-m/(r/min)	137.7/1800	176.5/1600		176.5/1600		186/1700			
	Bore×Stroke		mm	86×102	89×100		89×100		98×110			
	Emission STD.			Euro III					Euro III			
Fuel tank capacity		L	85	85		85		85				

Remark: 1.The maximum drawbar pull in the table are measured in dry concrete level off the road(Attachment coefficient of 0.8),the maximum drawbar will change as Attachment coefficient.
2.Specifications are subject to change without notice .

Dimensions



Chart



The tow weight (include tow truck and cargo) in the table are measured in dry concrete level off the road(friction coefficient of 0.015-0.018),the tow weight will change as friction coefficient.