



Burger Hub- und Transportmittel GmbH
Distribution Deutschland

Junostraße 30 | 35745 Herborn-Burg

Telefon: +49-2772/9657-0

E-Mail: kontakt@bhtgmbh.de

www.bhtgmbh.de
www.hangcha-gabelstapler.de



Follow us on
Facebook



Follow us on
YouTube



Follow us on
WeChat



Download "Hangcha
Forklift" App



HANGCHA trucks conform
to the European Safety
Requirements.

HANGCHA GROUP CO., LTD. reserves the right to make any changes without notice concerning colors, equipment, or specifications detailed in this brochure, or to discontinue individual models. The colors of trucks, delivered may differ slightly from those in brochures.

2024 VERSION 1 / COPYRIGHT 2024 / 03

SPiRiT Series Lithium-ion Electric Utility Vehicle

770lb(350kg) Load Capacity / 4,850lb(2200kg) Tow Capacity

HANGCHA Lithium-ion

Re-imagining **POWER**



Making Material Handling Easier
SINCE 1956



HANGCHA

APPEARANCE

The SPIRIT Series Lithium-ion Electric Utility Vehicle is designed to provide operators with a flexible option when moving goods, people and towing goods through warehouses, manufacturing facilities, and convention centers. Thanks to its versatile design, it is able to carry up to 770lb(350kg) or tow up to 4850lb(2200kg). The exterior of the SPIRIT Series Electric Utility Vehicle is also powder coated in a durable , easy to see, green finish that designates it as lithium-ion powered.



SAFE

Hangcha designed the SPIRIT Series Lithium-ion Electric Utility Vehicle to be safe. By providing a front anti-collision bar, OPS System, and front/rear arm rests standard, Hangcha is able to keep operators safe while operating the lithium-ion Electric Utility Vehicle.

- / The SPIRIT Series Lithium-ion Electric Utility Vehicle features a front anti-collision bar. This protects the front wheel from being hit and prevents items from getting tangled up underneath the Electric Utility Vehicle.
- / This Electric Utility Vehicle features an Operator Presence Sensing (OPS) System to ensure that it is safe and unintentional movements of the Electric Utility Vehicle won't occur.
- / Electric Utility Vehicle features armrests for the front and back seats to provide the operator and passenger with effective support and ensure their safety.



The Front Anti-Collision Bar



COMFORTABLE OPERATION

Hangcha designed the SPIRIT Series Lithium-ion Electric Utility Vehicle to be comfortable and intuitive while operating. By providing a large operator compartment, suspended rear drive axle, and dual function brake pedal, Hangcha is able to provide operators with a comfortable operating environment.

- / The SPIRIT Series Lithium-ion Electric Utility Vehicle features a large operator compartment with low step-on height. This combined with the wide imitation leather seat and spacious legroom provide operators with a comfortable operating experience.
- / The rear wheel drive axle is connected to the chassis via a independent coil spring. This effectively absorbs vibrations while operating on rough surfaces and enhances the comfort and driving stability of the personnel carrier.
- / The LCD color display instrument allows operators to clearly see battery capacity, driving speed, and equipment hours. In addition, the screen also allows for fault diagnosis information to be displayed.
- / The Electric Utility Vehicle is designed to be ergonomic. By placing the instrumentation, direction toggle switch, emergency cut-off switch, key switch, and head light switch on the center dashboard, the Electric Utility Vehicle becomes intuitive and convenient to operate.
- / The large brake pedal and regenerative braking function effectively reduce operator fatigue to allow them to work longer. The brake pedal is also integrated with the parking brake to provide a simple and easy-to-engage design.
- / The versatile design allows for the backrest to fold down and provide seating for an additional person.



The ergonomically designed dashboard with a LCD color display instrument.



Large Brake Pedal with Integrated Parking Brake Design



With the backrest folded down, the Electric Utility Vehicle can carry an additional person.



RELIABLE & EASY TO MAINTAIN

Hangcha designed the SPIRIT Series Lithium-ion Electric Utility Vehicle to be reliable and easy to maintain. By using key components, specific designs, and testing, Hangcha is able to build a reliable Electric Utility Vehicle that operators can count on.

- / Thanks to the electric lithium-ion design, the only maintenance required during the life cycle of the vehicle is to refill/change the lubricating oil.
- / The cover can easily be removed to inspect and service the transmission and the electrical system.
- / The SPIRIT Series Lithium-ion Electric Utility Vehicle features an AC brushless drive motor and AC controller for increased performance and reliability. The drive motor also allows the Electric Utility Vehicle to have regenerative braking and an anti-skidding function.

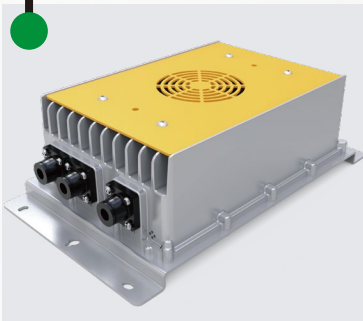
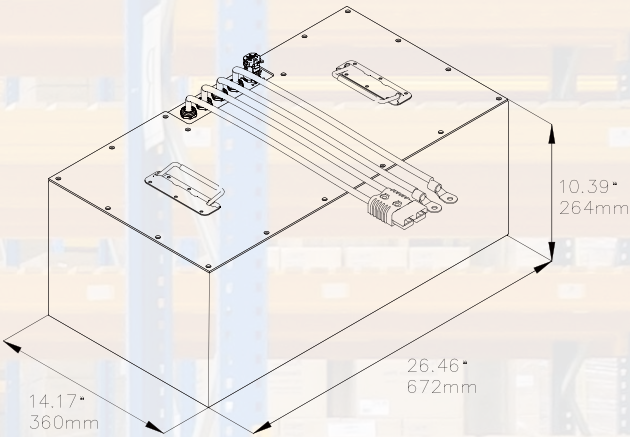


The AC Brushless Drive Motor

LITHIUM-ION POWER

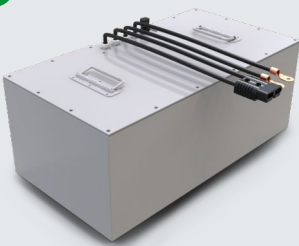
- / Integrated Battery Management System (BMS) continually monitors energy management and ensures reliable operation.
- / HANGCHA provides these Lithium Iron Phosphate (LiFePO₄) battery packs with up to a 5 year or 10,000 hour warranty.
- / See warranty certificate for specific warranty information on the Lithium Iron Phosphate battery packs.

SPIRIT Series Lithium-ion Electric Utility Vehicle Lithium-ion Battery And Charger Parameters		
Battery Parameters	Built-in Charger Parameters	Battery Charging Time
Type : Lithium Iron Phosphate Voltage : 48 V Capacity : 105 Ah	Input : 100-240Vac 50/60Hz Output : 54Vdc-25A	~5 hours



Built-In Charger

The Electric Utility Vehicle features an built-in charger with 100-240V/AC wide voltage. This charger can fully charge the Electric Utility Vehicle in 5 hours (105Ah) and opportunity charge as needed.



Maintenance-Free Battery Pack

The Electric Utility Vehicle features a Lithium Iron Phosphate (LiFePO₄) battery pack doesn't require any regular maintenance performed on the battery pack.

STANDARD CONFIGURATION

/ Powerful AC Traction Motor	/ Emergency Stop Switch	/ Three-Wheel Support	/ Foldable Back Rest
/ Curtis Controller	/ USB Port	/ Pneumatic Tires	/ Seat Belt
/ Lithium-ion Battery	/ Electric Horn	/ Front Anti-Collision Bar	/ Mechanical Parking Brake
/ Built-In Charger	/ Reverse Alarm	/ Integral Rubber Pedal Pad	/ Mechanical Service Brake
/ Operator Presence Sensing System (OPS)	/ LED Headlight	/ Suspended Drive Axle	/ Aluminum Plate Cargo Platform
/ Multi-Function Instrument	/ LED Combination Taillight	/ Folder Holder	

OPTIONS

/ Foot-operated Horn Switch	/ Special Language Label*
/ Strobe Light	/ Tow Pin Hook
/ Blue Light	/ "T-Bar" Steering Control
/ Special Charger plugs for local sockets*	

*Please contact us if you have any special requirements.



SPIRIT Series Lithium-ion Electric Utility Vehicle

Distinguishing Marks	01	Manufacturer			HANGCHA GROUP CO.,LTD.	
	02	Manufacturer's Type Designation			BD035-XC1-Z1NA	BD035-XC1-Z1
	03	Applicable Region			North American Region	Other Regions
	04	Power Type: Electric, Gas, Diesel, LPG			Electric	
	05	Operation Type			Rider Seated	
	06	Load Capacity/Rated Load	Q	lb(kg)	770(350)	
	07	Towing Capacity		lb(kg)	4850(2200)	
	08	Wheelbase	y	in(mm)	52.28(1328)	
Weight	09	Service Weight		lb(kg)	1058(480)	
Tires	10	Tire type			Pneumatic	
	11	Tire Size, front			4.80x8-6 PR	
	12	Tire Size, rear			4.80x8-6 PR	
	13	Number of Wheels, front / rear(x=driven)			1/2x	
Dimensions	14	Overall Length		in(mm)	85.43(2170)	
	15	Overall width		in(mm)	30.87(784)	
	16	Tuning Radius, outside		in(mm)	66.14(1680)	
Performance Data	17	Travel Speed, with load	l ₁	mph(km/h)	8.7(14)	
	18	Service Brake, operation / control	b ₁		Foot / Mechanical	
	19	Parking Brake, operation / control	w _a		Foot / Mechanical	
	20	Steering, type			Mechanical Loop Tiller Control Bar	
Electric Motor	21	Drive Motor			Three-Phase Electric AC Motor	
	22	Drive Motor, 60 minute rating		HP(kw)	3.4(2.5)	
	23	Battery Voltage		volts	48	
	24	Battery Capacity		Ah	105	
Additional Data	25	Controller Manufacturer			Curtis	

