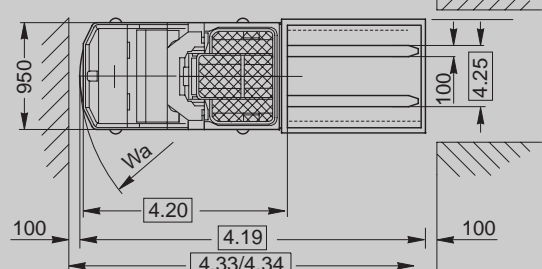
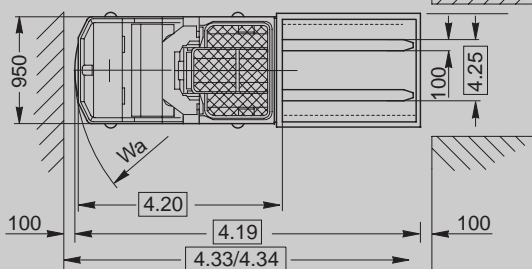
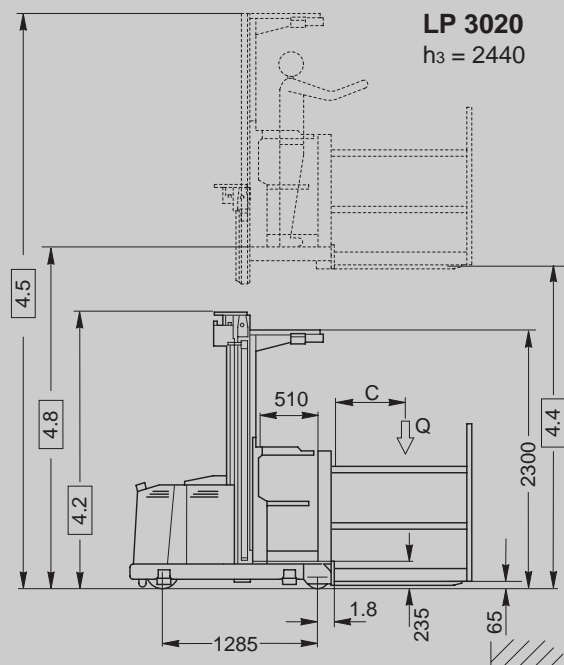
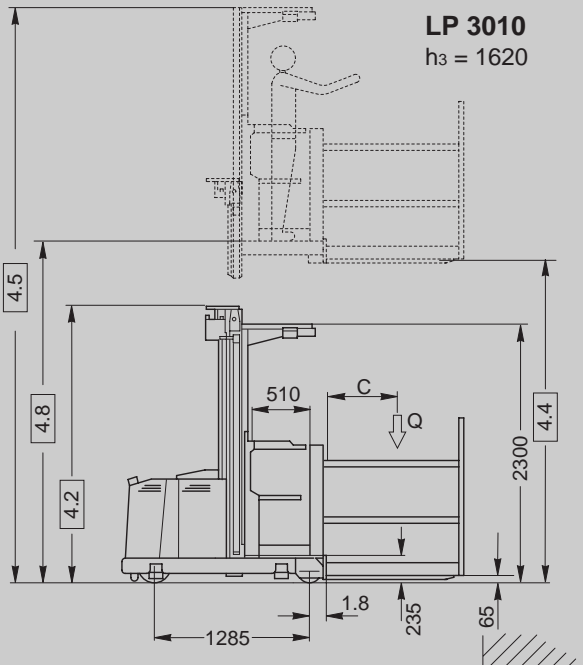
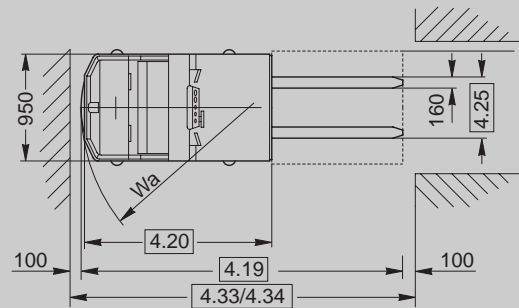
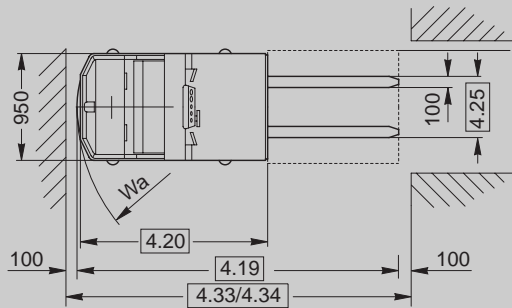
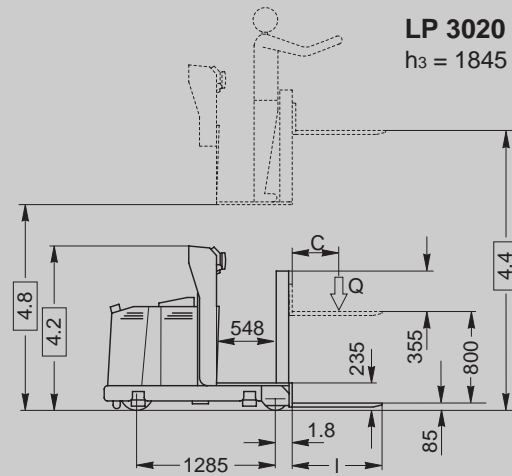
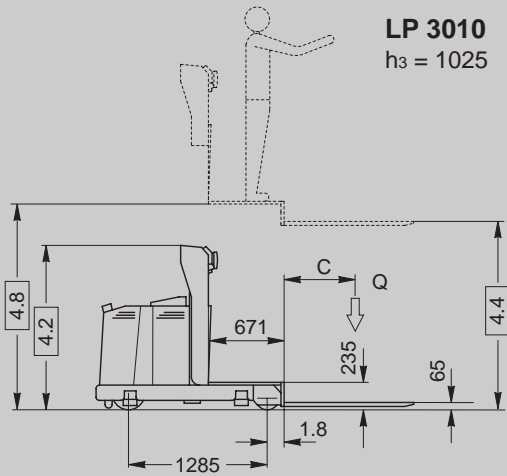


CROWN

LP 3000 Series
mid level order picker



specifications



Specifications Series LP 3000

General Information	1.1	Manufacturer			Crown Equipment Corporation			
	1.2	Model			LP 3010	LP 3020		
	1.3	Prime Mover			electric			
	1.4	Operator Type			centre rider			
	1.5	Load Capacity		Q	t	1		
	1.6	Load Centre		c	mm	600		
	1.8	Load Distance	forks lowered / raised	x	mm	153	165	
	1.9	Wheelbase	forks lowered / raised	y	mm	1285		
	Weights	2.1	Weight	less battery		kg	1350 / 1410	1430 / 1490
2.2		Axle Load	with load front / rear		kg	445/2380; 440/2445	440/2465; 435/2530	
2.3		Axle Load	without load front / rear		kg	1085/645; 1115/675	1075/735; 1075/795	
Tyres	3.1	Tyre Type	D/C/L			vulkollan		
	3.2	Wheel Size	front		mm	310 x 100		
	3.3	Wheel Size	rear		mm	200 x 105		
	3.5	Wheels	number (x = driven) front / rear			1x / 2		
	3.6	Track Width	front	b10	mm	0		
	3.7	Track Width	rear	b11	mm	820		
	Dimensions	4.2	Platform	collapsed height	h1	mm	1450 / 2300	1450 / 2300
4.4		Lift Height	incl. auxiliary lift (LP 3020 only)	h3	mm	1025 / 1620	1845 / 2440	
4.5		Platform	extended height	h4	mm	- / 3855	- / 3855	
4.8		Operator Stand Height	lowered / raised	h7	mm	235 / 1195; 1790		
4.11		Auxiliary Lift		h9	mm	-	800	
4.15		Lowered Fork Height		h13	mm	65	85	
4.19		Overall Length	at fork length 830/800	l1	mm	2542	2554	
4.20		Headlength		l2	mm	1718	1730	
4.21		Overall Width	front	b1	mm	950		
4.22		Fork Dimensions		thxwxl	mm	35x100x830, 1030	55x160x800, 1000, 1200	
				thxwxl	mm	35x100x1230		
4.25		Width Across Forks		b5	mm	560 / 650	560 / 680	
4.31		Ground Clearance		m1	mm	30		
4.33		Transfer Aisle	800 x 1200 traverse	Ast	mm	2915	2925	
4.34		Working Aisle Width	minimum		mm	1150		
4.35	Turning Radius	lowered	Wa	mm	1589			
Performance	5.1	Travel Speed	with / without load		km/h	7.8 / 9		
	5.2	Lift Speed	with / without load		m/s	0.12/0.15; 0.13/0.18	0.12/0.15; 0.13/0.18	
	5.3	Lowering Speed	with / without load		m/s	0.27/0.17; 0.27/0.20	0.27/0.17; 0.27/0.20	
	5.7	Gradeability	with / without load		%	8 / 10		
	5.10	Service Brake				electric		
Motors	6.1	Traction Motor	60 min. rating, std.		KW	1.5		
	6.2	Lift Motor	15 % on time, std.		KW	2.5		
	6.2a	Steer Motor			KW	0.7		
	6.3	Max. Battery Box Size		lxwxh		324 x 827 x 537 / 627		
	6.4	Battery Voltage	nominal capacity 5h rating		V/ Ah	24 / 450 L; 550 L		
6.5	Battery Weight	nominal ± 5%		kg	380 / 495			
Misc.	8.1	Type of Controller	drive / lift / steer			transistor		
	8.2	Available Work. Pressure			bar	90 / 110	95 / 118	
	8.4	Noise Level			dB/ A	< 70		

Standard Equipment

1. Mosfet transistor control for traction, lift and steer function.
2. Operator display.
3. Electric power steering.
4. Steer wheel position indicator.
5. Battery discharge indicator with lockout and integrated hour meter.
6. On-board diagnostic.
7. Acoustic overload signal.
8. Flashing light.
9. Operator control on both sides of operator platform (LP3020).
10. Independent lifting forks (LP3020).
11. Overhead guard on lift heights:
1620 mm (LP3010)
2440 mm (LP3020).
12. Batteries 24 Volt / 450L, 550L.

Optional Equipment

1. Aisle guide rollers.
2. In-aisle, self-centring electric steering lock.
3. In-aisle diagonal lift with self-centring electric steering lock.
4. Working lights (for models with overhead guards).
5. Battery rollers.
6. Battery extraction trolley.
7. Special frame and platform widths.

Safety Regulations

Conforms to European safety standards.

Dimensions and performance data given may vary due to manufacturing tolerances. Performance is based on an average size vehicle and is affected by weight, condition of truck, how it is equipped and the conditions of the operating area. Crown products and specifications are subject to change without notice.



European Manufacturing:

Crown Gabelstapler GmbH
Roding, Germany

Crown Equipment
Galway, Ireland